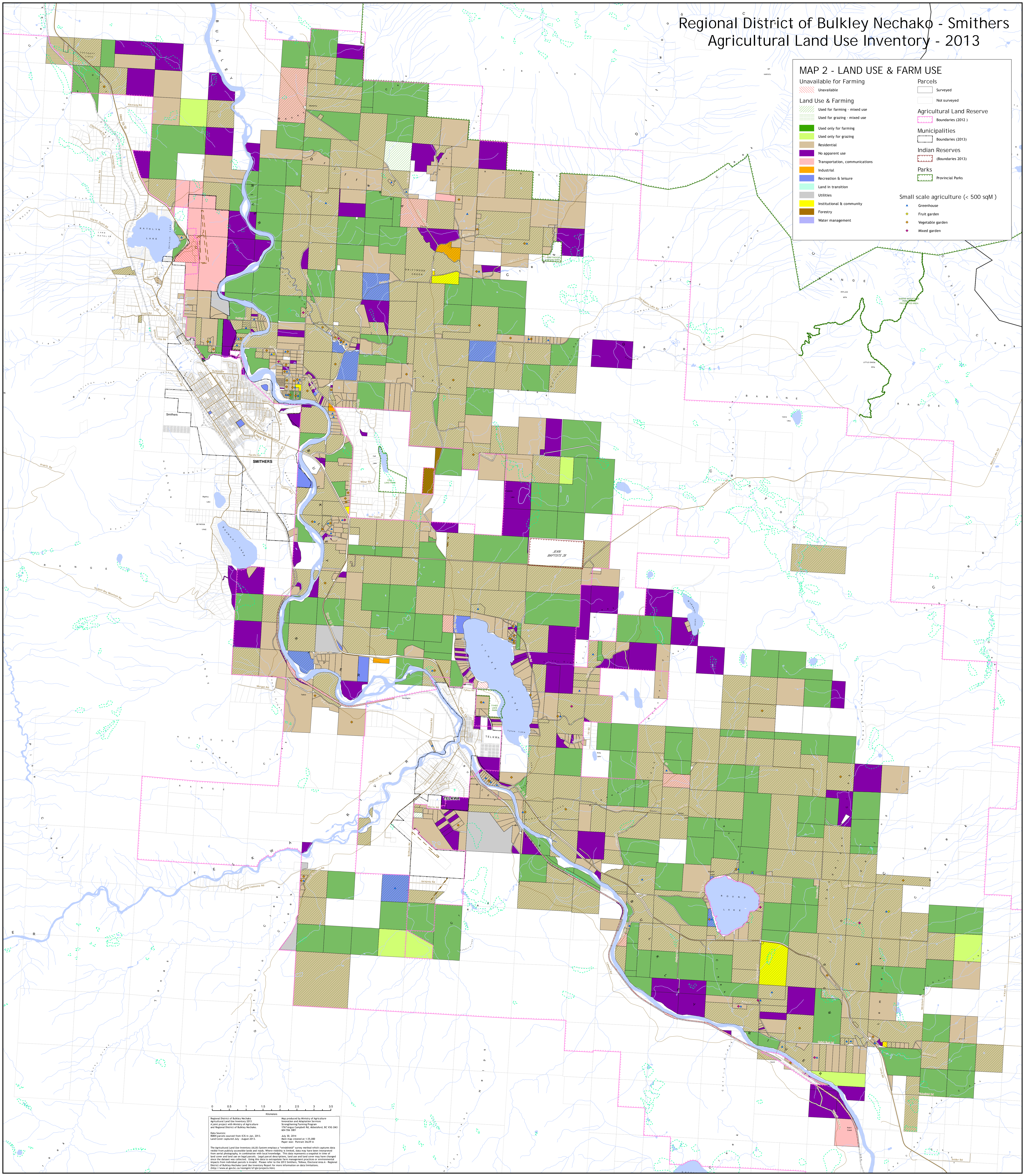


Regional District of Bulkley Nechako - Smithers Agricultural Land Use Inventory - 2013

MAP 2 - LAND USE & FARM USE

| | |
|--------------------------------|---|
| Unavailable for Farming | Parcels |
| Unavailable | Surveyed |
| Used for farming - mixed use | Not surveyed |
| Used for grazing - mixed use | Agricultural Land Reserve |
| Used only for farming | Boundaries (2012) |
| Used only for grazing | Municipalities |
| Residential | Boundaries (2013) |
| No apparent use | Indian Reserves |
| Transportation, communications | (Boundaries 2013) |
| Industrial | Parks |
| Recreation & leisure | Provincial Parks |
| Land in transition | |
| Utilities | Small scale agriculture (< 500 sqM) |
| Institutional & community | Greenhouse |
| Forestry | Fruit garden |
| Water management | Vegetable garden |
| | Mixed garden |



0 0.5 1 1.5 2 2.5 3 3.5
Kilometers

Regional District of Bulkley Nechako
Agricultural Land Use Inventory 2013
A joint project with Ministry of Agriculture
and Forestry of British Columbia
and Regional District of Bulkley Nechako.

Map produced by Ministry of Agriculture
Inspection and Adaptation Services
1100 Highway 97, Kamloops, BC V2C 2K3
Tel: 250-863-5000
Fax: 250-863-5001

Date Sources:
Satellite photos sourced from ICES in Jan. 2013.
Land Cover (current data - August 2012)
July 30, 2014
Map scale: 1:25,000
Map data: 2013

The agricultural land use inventory (ALUI) system employs a "two-stage" mapping method which captures data visible from publicly accessible lands and roads. Where visibility is limited, data may have been interpolated from aerial photography in consultation with local knowledge. This data represents a snapshot in time of land cover and land use on legal parcels. Small parcel descriptions, land use and land cover may have changed since the dataset was collected. Users are encouraged to refer to the most up-to-date maps or environmental reports from various sources to verify the data. For more information on the 2013 inventory, please contact the Regional District of Bulkley Nechako Land Use Inventory Regulator for more information on data limitations.
<http://www.agric-bc.ca/programs/als/index.html>