



REGIONAL DISTRICT OF BULKLEY-NECHAKO

ISLAND LAKE WILDFIRE EXPANDED EVACUATION ORDER ISSUED August 8, 2018, at 1700 hrs

Pursuant to Section 12 (1) of the *Emergency Program Act*, and the Provincial Declaration of State of Local Emergency for Regional District of Bulkley-Nechako Electoral Area 'D' (Fraser Lake Rural), an Evacuation Order has been issued by the Regional District of Bulkley-Nechako due to immediate danger to **life safety** due to a wildland interface fire.

The Evacuation Order is in effect for:

Binto Wo Forest Service Road (FSR) to 400 metres east of Nithi Road, Nithi Pit Road and a portion of Holy Cross Binta FSR. South of Francois Lake to above the Binta Main FSR including Francois Lake Provincial Park. Including two islands located on the east end of Francois Lake, Lots 2714 and 2713 (as shown on the attached map).

Evacuees Please:

- Register at the Reception Centre in Fraser Lake or contact the Emergency Social Services Director from 0800 to 1600 at **250-699-6257**; or
- Visit the Reception Centre in Fraser Lake at the Fraser Lake Municipal Office at 210 Carrier Crescent or contact the Reception Centre at **250-699-6257**.
- After hours in regard to Emergency Social Services (ESS) please contact the Regional District of Bulkley-Nechako at 250-692-3195 or Emergency Management BC at 1-800-663-3456.
- Emergency Social Services can provide assistance for food, lodging, clothing, emotional support and family reunification.

WHAT YOU SHOULD DO:

- You must leave the area **immediately**.
- If you need transportation assistance from the area please advise the individual providing this notice or call the Regional District of Bulkley-Nechako at 250-692-3195 or Emergency Management BC at 1-800-663-3456.
- Close all windows and doors.
- Shut off all gas and electrical appliances, other than refrigerators and freezers
- Close gates (latch) but do not lock.
- Gather your family: take a neighbour or someone who needs help.
- Take critical items (medicine, purse, wallet, and keys) only if they are immediately available. Take pets in pet kennels or on leash.

YOU MUST LEAVE THE AREA IMMEDIATELY



REGIONAL DISTRICT OF BULKLEY-NECHAKO

For media inquiry, please contact:

Regional District of Bulkley-Nechako

250-692-3195 or 1-800-320-3339

Bill Miller

Regional District of Bulkley-Nechako Board Chair

250-692-9940

For public inquiry, please contact:

Regional District of Bulkley-Nechako

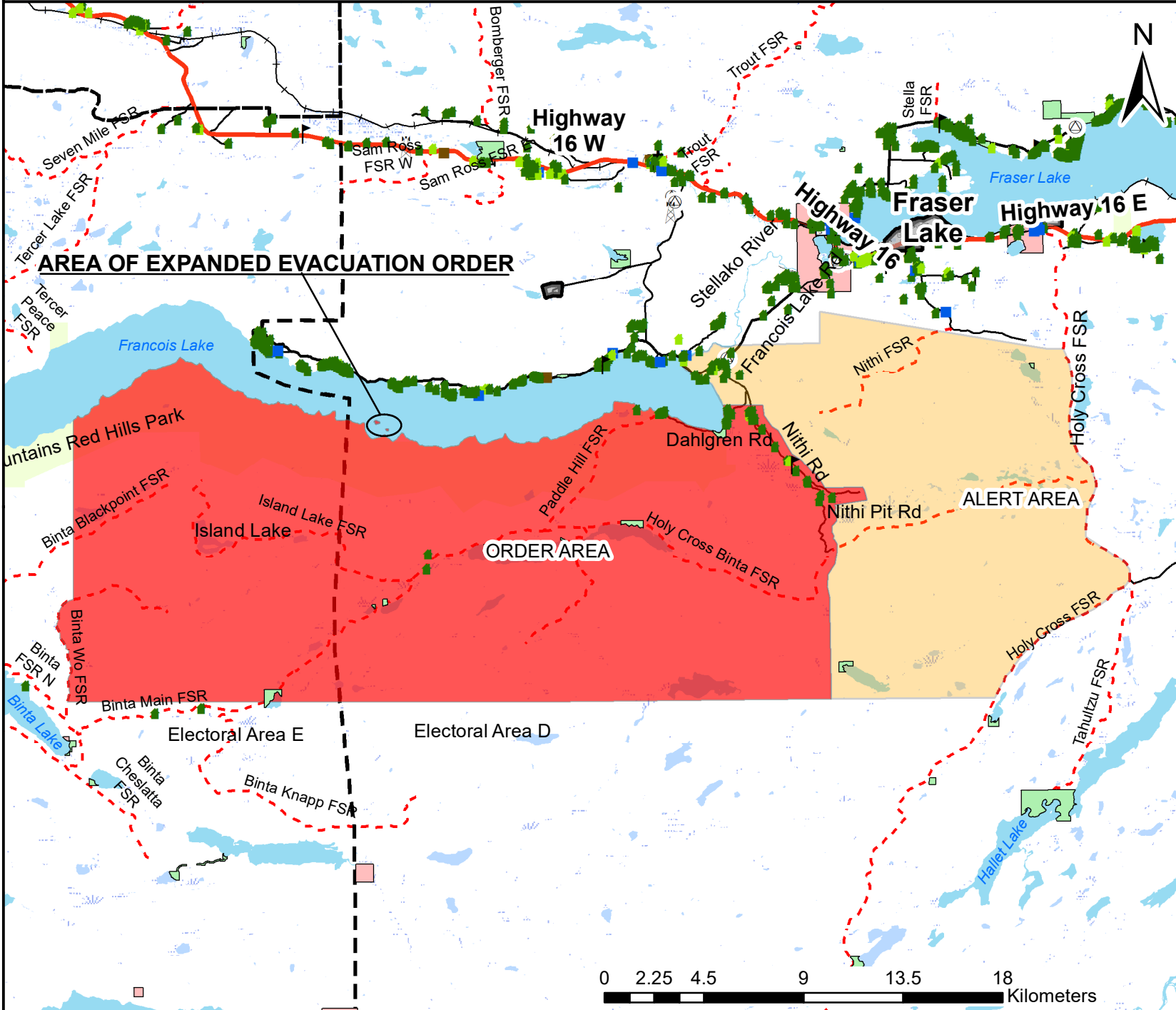
at www.rdbn.bc.ca or call 250-692-3195 or 1-800-320-3339



Bill Miller, Chair
Regional District of Bulkley-Nechako



Island Lake Wildfire Expanded Evacuation Order Area - 08 Aug 2018 1700h



Legend

- Order Area
- Alert Area
- Parks
- + Church
- Commercial
- Community Hall
- FD Fire Department
- House
- Mobile Home
- T Tower
- U Utility
- Vacant
- Recreation Sites
- Indian Reserve
- Municipal Boundary
- Electoral Area Boundary
- Highway
- Forest Service Road
- Major Secondary Road
- Secondary Road
- City Street
- Railways
- Lake
- River
- Wetland

*DISCLAIMER. The Regional District of Bulkley-Nechako makes no Warranty, Representation or Guarantee of any kind regarding either maps or other information provided herein or the sources of such maps or other information. The Regional District of Bulkley-Nechako assumes no liability, either for any errors, omissions, or inaccuracies in the information provided regardless of the cause of such or for any decision made, action taken, or action not taken by the user in reliance upon any maps or information provided herein. Please be advised that the data represented here will be maintained on an ongoing basis, and as such, changes frequently.

Scale: 1 cm = 2,438 m
 User: eric.rehwald
 Date: 08-Aug-2018
 Time: 4:46:50 PM

