



REGIONAL DISTRICT OF BULKLEY-NECHAKO

VERDUN WILDFIRE EXPANDED EVACUATION ORDER ISSUED August 22, 2018, at 1845 hrs

Pursuant to Section 12 (1) of the *Emergency Program Act*, and the Provincial Declaration of State of Local Emergency for Regional District of Bulkley-Nechako an Expanded Evacuation Order has been issued by the Regional District of Bulkley-Nechako due to immediate danger to **life safety** due to a wildland interface fire.

The **Expanded Evacuation Order** is in effect for:

Cheslatta Lake south to Ootsa Lake and east to the Holy Cross FSR (as shown on the attached map).

Evacuees Please:

- It is encouraged that residents register in the communities nearest to where they have been evacuated. Due to limited availability for local accommodations, if you require lodging, you may be required to travel to Prince George.
- Please register at the ESS reception centre at the Burns Lake College of New Caledonia located at 545 Hwy 16 W, 9 am – 4 pm.
- After hours in regard to Emergency Support Services (ESS) please contact the Regional District of Bulkley-Nechako at **250-692-3195** or **1-800-320-3339** or Emergency Management BC at 1-800-663-3456.
- Emergency Support Services can provide assistance for food, lodging, emotional support and family reunification.

If you are a farm business and require assistance in regard to livestock please contact the Regional District of Bulkley-Nechako (RDBN) at **250-692-3195** or **1-800-320-3339**.

WHAT YOU SHOULD DO:

- You must leave the area **immediately**.
- If you need transportation assistance from the area, please advise the individual providing this notice or call the Regional District of Bulkley-Nechako at 250-692-3195 or Emergency Management BC at 1-800-663-3456.
- Close all windows and doors.
- Shut off all gas and electrical appliances, other than refrigerators and freezers.
- Close gates (latch) but do not lock.
- Gather your family: take a neighbour or someone who needs help.
- Take critical items (medicine, purse, wallet, and keys) only if they are immediately available. Take pets in pet kennels or on leash.

YOU MUST LEAVE THE AREA IMMEDIATELY



REGIONAL DISTRICT OF BULKLEY-NECHAKO

For media inquiry, please contact:

Regional District of Bulkley-Nechako

250-692-3195 or 1-800-320-3339

Bill Miller

Regional District of Bulkley-Nechako Board Chair

250-692-9940

For public inquiry, please contact:

Regional District of Bulkley-Nechako

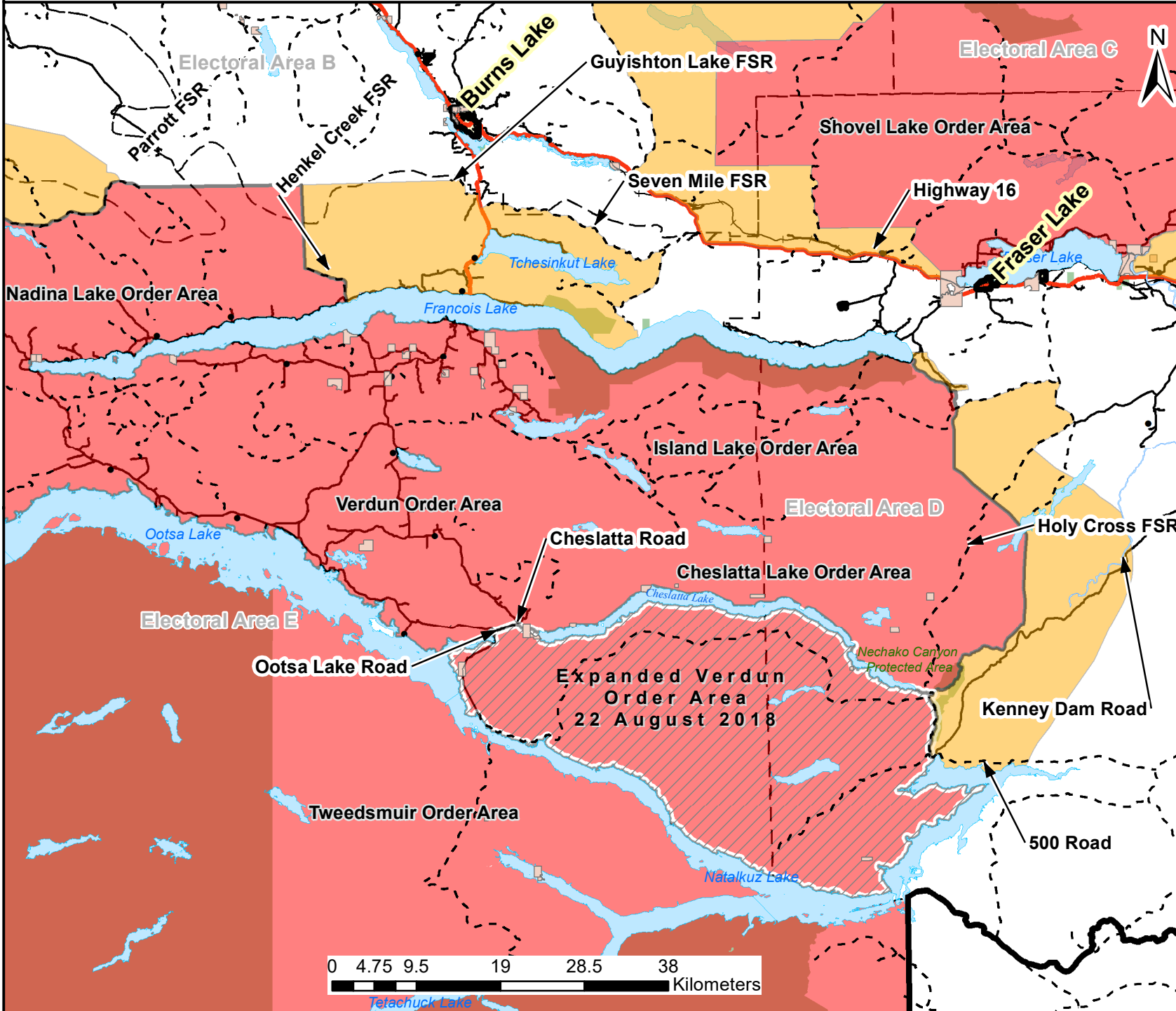
at www.rdbn.bc.ca or call 250-692-3195 or 1-800-320-3339

A handwritten signature in blue ink, appearing to read "Bill Miller", is written over a horizontal line.

Bill Miller, Chair
Regional District of Bulkley-Nechako



Verdun Fire Expanded Evacuation Order Area - 22 Aug 2018 1845h



Legend

- Verdun Fire - Alert changed to Order Aug 22 2018
- Order Areas
- Alert Areas
- Indian Reserve
- RDBN Boundary
- Municipal Boundary
- Electoral Area Boundary
- Parks
- Forest Service Road
- Highway
- Minor Road

*DISCLAIMER. The Regional District of Bulkley-Nechako makes no Warranty, Representation or Guarantee of any kind regarding either maps or other information provided herein or the sources of such maps or other information. The Regional District of Bulkley-Nechako assumes no liability, either for any errors, omissions, or inaccuracies in the information provided regardless of the cause of such or for any decision made, action taken, or action not taken by the user in reliance upon any maps or information provided herein. Please be advised that the data represented here will be maintained on an ongoing basis, and as such, changes frequently.



Scale: 1 cm = 6,000 m
 User: jennifer.macintyre
 Date: 2018-08-22
 Time: 6:35:50 PM