



## REGIONAL DISTRICT OF BULKLEY-NECHAKO

### **SHOVEL LAKE WILDFIRE EXPANDED EVACUATION ALERT August 12, 2018 at 1100 hours**

An Expanded Evacuation Alert issued by the Regional District of Bulkley-Nechako is effective **August 12, 2018**, at **1100** hours.

Because of the potential danger to **life and health** the Regional District of Bulkley-Nechako has issued an Alert in the following geographic area:

**East of the Augier Main FSR to Necoslie and Dog Creek FSR. North of Hwy 16 and the North shore of Fraser Lake. South of Stuart Lake and Mount Pope Park. (as shown on the attached map).**

An Evacuation Alert has been issued to prepare you to evacuate your premises or property should it be found necessary. Residents will be given as much advance notice as possible prior to evacuation; however, you may receive limited notice due to changing conditions.


If you require assistance in regard to livestock please contact the Regional District of Bulkley-Nechako (RDBN) at 1-800-320-3339 or 250-692-3195.

#### **WHAT YOU SHOULD DO WHILE THIS ALERT IS IN EFFECT**

Be prepared for the evacuation order by:

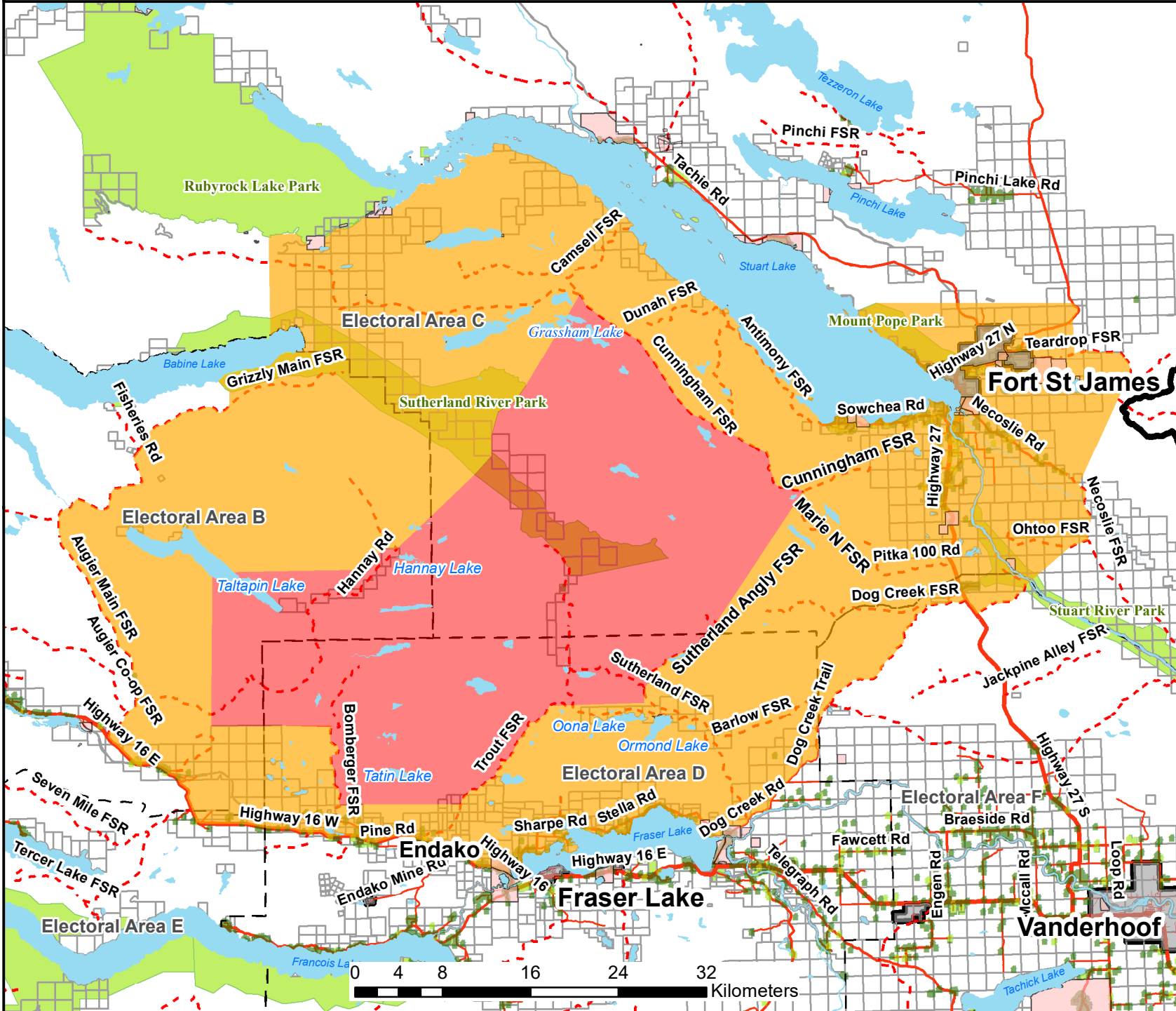
- Locating all family members or co-workers and plan to meet outside the evacuation area, should an evacuation be called while separated.
- Gathering essential items such as medications, eyeglasses, valuable papers (i.e. insurance), immediate care needs for dependants and, if you choose, keepsakes (photographs, etc.). Have these items readily available for quick departure.
- Preparing to move any disabled persons and/or children.
- Arranging to transport your household members or co-workers in the event of an evacuation order. If you need transportation assistance from the area please call (250) 692-3195 or 1-800-320-3339.
- Arranging accommodation for your family if possible. In the event of an evacuation, a Reception Centre will be opened if required. Monitor your local radio station and the Regional District of Bulkley-Nechako website, [www.rdbn.bc.ca](http://www.rdbn.bc.ca), and the Bulkley-Nechako Emergency Information Facebook Page for information on this Evacuation Alert.

For more information contact: Regional District of Bulkley-Nechako at 1-800-320-3339 Monday to Friday from 0830 – 1630.

  
\_\_\_\_\_  
Bill Miller  
Chair, Regional District of Bulkley-Nechako



# Shovel Lake Fire Expanded Evacuation Order and Alert Areas - 12 Aug 2018 1100h



- Legend**
- Orders
  - Alerts
  - Municipal Boundary
  - Electoral Area Boundary
  - First Nations Reserve
  - House
  - Mobile Home
  - Multi Family Dwelling
  - Forest Service Road
  - Highway
  - Major Secondary Road
  - Secondary Road
  - City Street
  - Parks

\*DISCLAIMER. The Regional District of Bulkley-Nechako makes no Warranty, Representation or Guarantee of any kind regarding either maps or other information provided herein or the sources of such maps or other information. The Regional District of Bulkley-Nechako assumes no liability, either for any errors, omissions, or inaccuracies in the information provided regardless of the cause of such or for any decision made, action taken, or action not taken by the user in reliance upon any maps or information provided herein. Please be advised that the data represented here will be maintained on an ongoing basis, and as such, changes frequently.

Scale: 1 cm = 4,826 m  
 User: jennifer.macintyre  
 Date: 2018-08-12  
 Time: 10:53:20 AM