



REGIONAL DISTRICT OF BULKLEY-NECHAKO

NADINA-VERDUN WILDFIRE EVACUATION ALERT August 14, 2018 at 1200 hours

An Evacuation Alert issued by the Regional District of Bulkley-Nechako is effective **August 14, 2018**, at 1200 hours.

Because of the potential danger to **life and health** the Regional District of Bulkley-Nechako has issued an Alert in the following geographic area:

- **From approximately 8 km South of the District of Houston (please see map) to Ootsa Lake**
- **Glacier FSR to the middle of Cheslatta Lake – Nechako Reservoir (as shown on the attached map).**

An Evacuation Alert has been issued to prepare you to evacuate your premises or property should it be found necessary. Residents will be given as much advance notice as possible prior to evacuation; however, you may receive limited notice due to changing conditions.

If you are a farm business and require assistance in regard to livestock please contact the Regional District of Bulkley-Nechako (RDBN) at **250-692-3195** or **1-800-320-3339**.

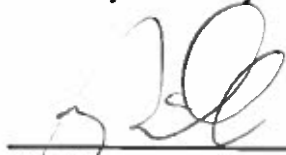
WHAT YOU SHOULD DO WHILE THIS ALERT IS IN EFFECT

Be prepared for the evacuation order by:

- Locating all family members or co-workers and plan to meet outside the evacuation area, should an evacuation be called while separated.
- Gathering essential items such as medications, eyeglasses, valuable papers (i.e. insurance), immediate care needs for dependants and, if you choose, keepsakes (photographs, etc.). Have these items readily available for quick departure.
- Preparing to move any disabled persons and/or children.
- Arranging to transport your household members or co-workers in the event of an evacuation order. If you need transportation assistance from the area please call (250) 692-3195 or 1-800-320-3339.
- Arranging accommodation for your family if possible. In the event of an evacuation, a Reception Centre will be opened if required. Monitor your local radio station and the Regional District of Bulkley-Nechako website, www.rdbn.bc.ca, and the Bulkley-Nechako Emergency Information Facebook Page for information on this Evacuation Alert.

**Nadina-Verdun Wildfire
EVACUATION ALERT
August 14, 2018 at 1200 hours**

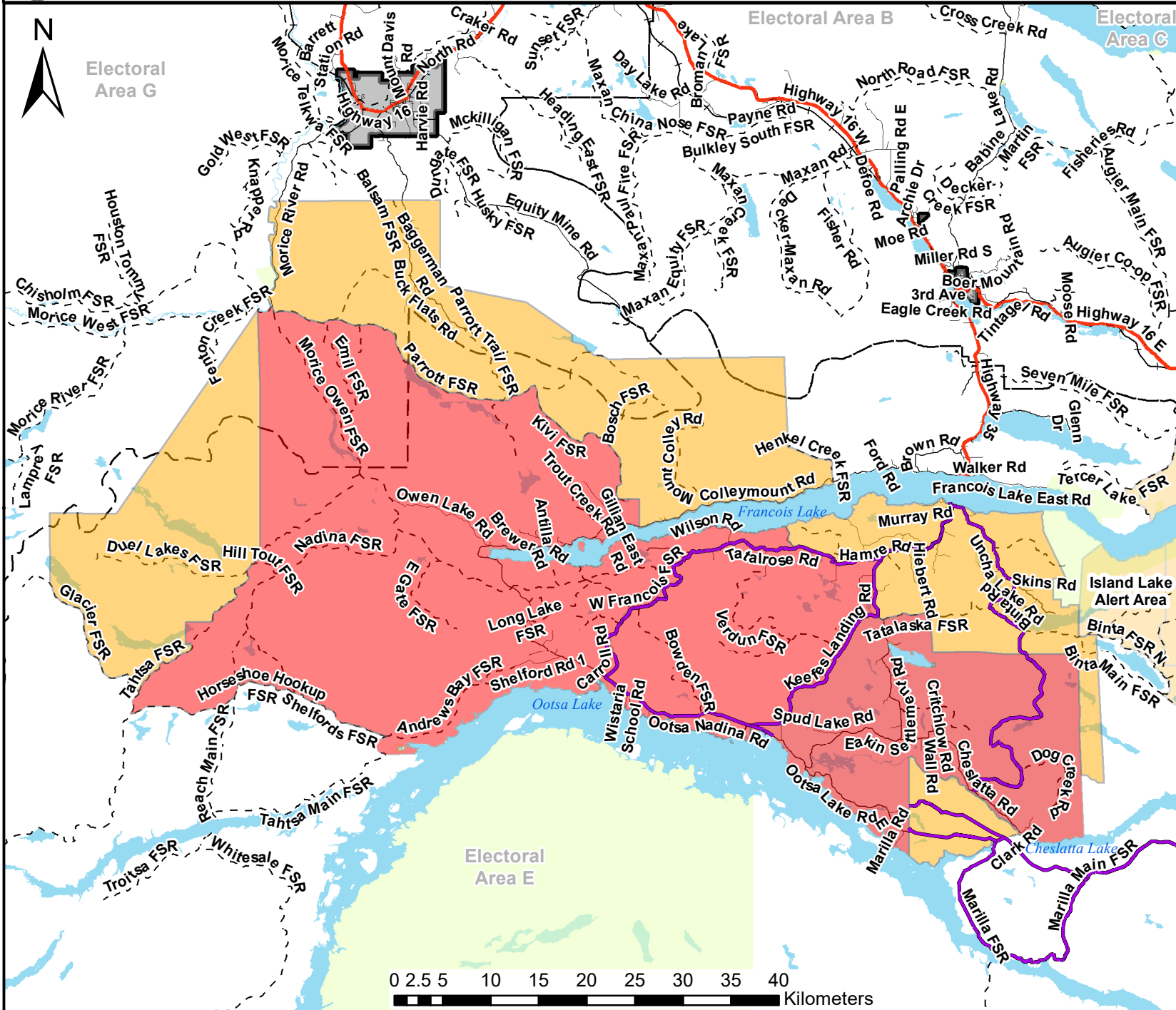
For more information contact: Regional District of Bulkley-Nechako at 1-800-320-3339
Monday to Friday from 0830 – 1630.



Bill Miller
Chair, Regional District of Bulkley-Nechako



Nadina - Verdun Wildfires Extended Evacuation Order and Alert Areas - 14 Aug 2018 1200h



Legend

- Nadina Verdun Alert Area
- Nadina Verdun Order Area
- Recommended Evacuation Route
- Forest Service Road
- Ferry
- Highway
- Major Secondary Road
- Secondary Road
- City Street
- Trail
- Railways
- Municipal Boundary
- Electoral Area Boundary
- Parks

*DISCLAIMER. The Regional District of Bulkley-Nechako makes no Warranty, Representation or Guarantee of any kind regarding either maps or other information provided herein or the sources of such maps or other information. The Regional District of Bulkley-Nechako assumes no liability, either for any errors, omissions, or inaccuracies in the information provided regardless of the cause of such or for any decision made, action taken, or action not taken by the user in reliance upon any maps or information provided herein. Please be advised that the data represented here will be maintained on an ongoing basis, and as such, changes frequently.

Scale: 1 cm = 5,610 m
 User: jennifer.macintyre
 Date: 2018-08-14
 Time: 11:39:34 AM