



## REGIONAL DISTRICT OF BULKLEY-NECHAKO

### **NADINA-VERDUN WILDFIRE EVACUATION ORDER ISSUED August 14, 2018, at 1200 hrs**

Pursuant to Section 12 (1) of the *Emergency Program Act*, and the Provincial Declaration of State of Local Emergency for the Regional District of Bulkley-Nechako an Evacuation Order has been issued by the Regional District of Bulkley-Nechako due to immediate danger to **life safety** due to a wildland interface fire.

The Evacuation Order is in effect for:

- **West of Tahtsa FSR (south Francois) to east of Dog Creek RD and the middle of Cheslatta Lake-Nechako Reservoir**
- **West of Morice Own FSR (north Francois) to Kivi FSR (as shown on the attached map).**

**\*\*PLEASE NOTE: The recommended evacuation routes (see attached map) will remain open until safe travel is compromised. We encourage immediate evacuation.**

**The Francois Lake Forester Ferry will be operating extended hours as required to support the needs of the Evacuation Order.**

#### **Evacuees Please:**

- Register at the ESS reception centre at the Burns Lake College of New Caledonia located at 545 Hwy 16 W, 9 am – 4 pm.
- Due to limited availability for local accommodations, if you require lodging, you may be required to travel to Prince George. Please register at the ESS reception centre at the Back Entrance of the CN Centre in Prince George located at 100-2187 Ospika Blvd. between 8 am – 6 pm. After hours, please refer to the sign on the door of the reception centre for available accommodations and further instruction.
- After hours in regard to Emergency Social Services (ESS) please contact the Regional District of Bulkley-Nechako at **250-692-3195** or **1-800-320-3339** or Emergency Management BC at 1-800-663-3456.
- Emergency Social Services can provide assistance for food, lodging, clothing, emotional support and family reunification.

If you are a farm business and require assistance in regard to livestock please contact the Regional District of Bulkley-Nechako (RDBN) at **250-692-3195** or **1-800-320-3339**.

#### **WHAT YOU SHOULD DO:**

- You must leave the area **immediately**.
- If you need transportation assistance from the area please advise the individual providing this notice or call the Regional District of Bulkley-Nechako at 250-692-3195 or Emergency Management BC at 1-800-663-3456.



## REGIONAL DISTRICT OF BULKLEY-NECHAKO

- Close all windows and doors.
- Shut off all gas and electrical appliances, other than refrigerators and freezers
- Close gates (latch) but do not lock.
- Gather your family: take a neighbour or someone who needs help.
- Take critical items (medicine, purse, wallet, and keys) only if they are immediately available. Take pets in pet kennels or on leash.

**YOU MUST LEAVE THE AREA IMMEDIATELY**

**For media inquiry, please contact:**

**Regional District of Bulkley-Nechako**

250-692-3195 or 1-800-320-3339

**Bill Miller**


Regional District of Bulkley-Nechako Board Chair

250-692-9940

**For public inquiry, please contact:**

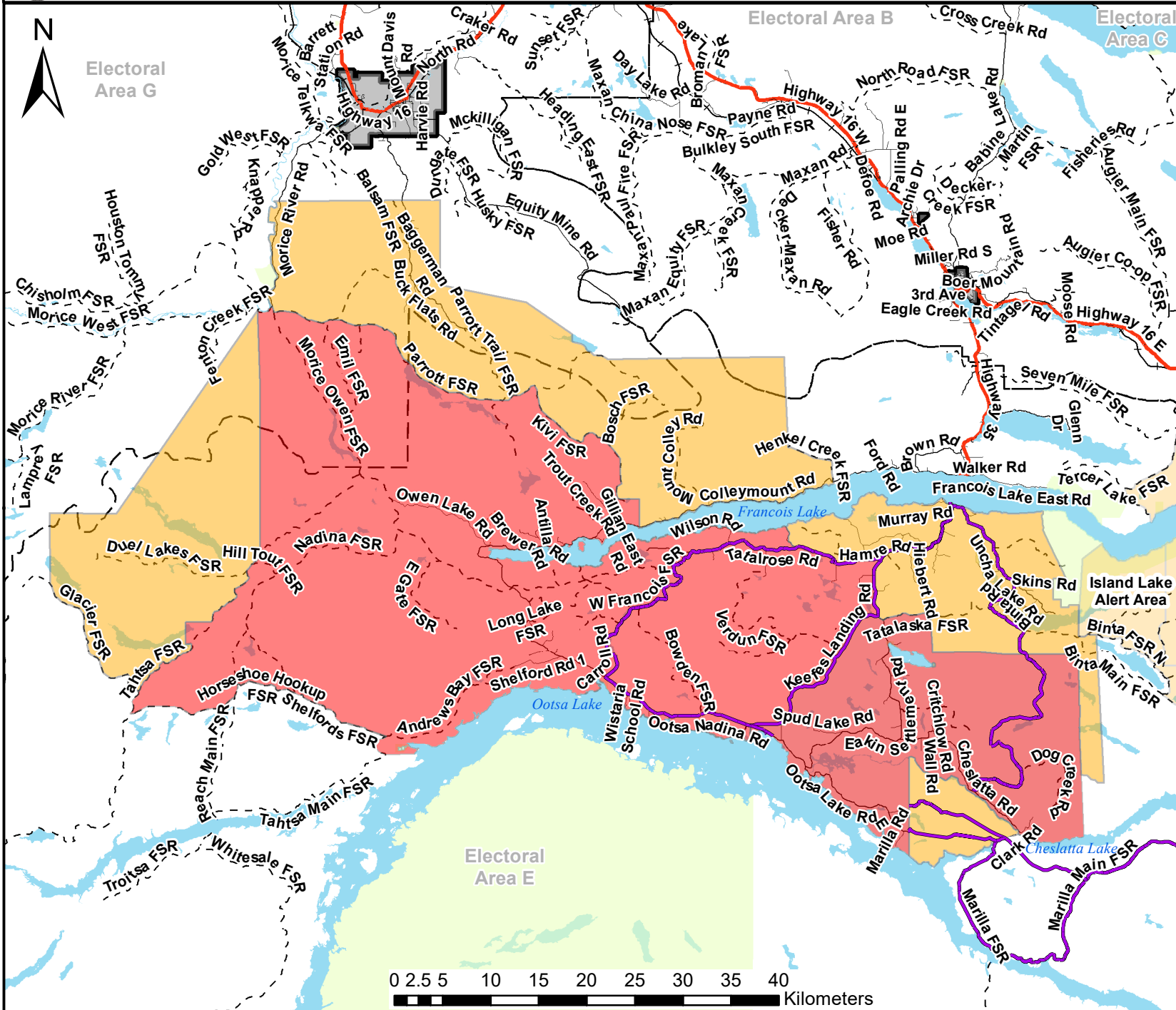
**Regional District of Bulkley-Nechako**

at [www.rdbn.bc.ca](http://www.rdbn.bc.ca) or call 250-692-3195 or 1-800-320-3339

  
\_\_\_\_\_  
Bill Miller, Chair  
Regional District of Bulkley-Nechako



# Nadina - Verdun Wildfires Extended Evacuation Order and Alert Areas - 14 Aug 2018 1200h



**Legend**

- Nadina Verdun Alert Area
- Nadina Verdun Order Area
- Recommended Evacuation Route
- Forest Service Road
- Ferry
- Highway
- Major Secondary Road
- Secondary Road
- City Street
- Trail
- Railways
- Municipal Boundary
- Electoral Area Boundary
- Parks

\*DISCLAIMER. The Regional District of Bulkley-Nechako makes no Warranty, Representation or Guarantee of any kind regarding either maps or other information provided herein or the sources of such maps or other information. The Regional District of Bulkley-Nechako assumes no liability, either for any errors, omissions, or inaccuracies in the information provided regardless of the cause of such or for any decision made, action taken, or action not taken by the user in reliance upon any maps or information provided herein. Please be advised that the data represented here will be maintained on an ongoing basis, and as such, changes frequently.

**Scale: 1 cm = 5,610 m**  
 User: jennifer.macintyre  
 Date: 2018-08-14  
 Time: 11:39:34 AM