

GROWING OPPORTUNITIES

Bulkley-Nechako Agriculture Update



May 2025 - Issue 27

Agriculture Coordinator Update

Spring has sprung! Even the shadiest areas are green and growing, and the leaves are fully flushed. The weather has seemed fairly unsettled lately, making it hard to know what to expect. The [B.C. Drought Information Portal](#) is being updated regularly and currently shows part of the region as Drought Level 1, or abnormally dry. Other areas of the region will be updated during the drought season (after freshet until onset of winter). Frost is in the immediate forecast for some areas, which is not good for tender plants, but will keep the snow in the mountains for a bit longer.

Livestock Processing Services Project

LIVESTOCK PROCESSING SERVICES PROJECT



Sustainable solutions for our local food system



Sustainable Solutions for Livestock Processing in Northwest BC

The Society for Making Agriculture Sustainable in the Hazeltons (MASH) and the Regional District of Bulkley-Nechako are announcing a project to enhance livestock processing services in Northwest British Columbia.

Committed to sustainable local food systems, this project addresses key service gaps for poultry and livestock producers through community collaboration and expert input. The initiative aims to strengthen local food systems, boost economic opportunities, and enhance community resilience by integrating tailored solutions that meet environmental, social, and economic sustainability goals.

Project Timeline and Key Milestones

Funding was received in April 2025 and the workplan spans several critical stages:

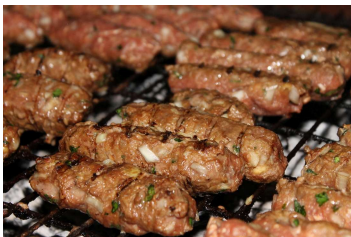
► **Planning & Research (April – May 2025):** Team building and collaboration with frameworks for solution design, including analysis of BC Small-Scale Meat Producers' work.

► **Consultation (June – September 2025):** Engagement with key stakeholders to identify critical elements. A SWOT analysis of various slaughter and processing options will also be conducted.

► **Toolkit Development (May – Nov 2025):** Finalization of business plan templates addressing labour options, training, equipment and financing. Potential partnerships will be explored.

► **Community Engagement (November 2025):** Toolkit availability will be expanded to non-profits and businesses through both in-person open houses in Terrace, Hazeltons, Smithers, and Vanderhoof, as well as digital access.

► **Follow-Up to Recommendations (Ongoing):** Ensuring the development of sustainable and actionable solutions tailored for the local food system.



The BC Ministry of Agriculture and Food, and the Partnership for Water Sustainability in BC are completing an Agricultural Land Use Inventory (ALUI) in the Regional District of Bulkley-Nechako (July 7th to August 30th).

The ALUI program started in Pitt Meadows in 1996 to support the Ministry's Strengthening Farming Program. Since then, ALUIs have provided insight into the current state of the farming landscape across the province, including within the Agricultural Land Reserve (ALR).

Agricultural Land Use Inventory data has been used to:

- Model potential impacts of climate change and different adaptation strategies;
- Model agricultural water demand for current and future climates;
- Inform the development of municipal Official Community Plans and Agriculture Area Plans;
- Understand the extent of actively farmed land and other major activities on the ALR land base; and
- Understand impacts to agriculture from new developments, bylaws, or regulations.

Visual observations are conducted from public roads using vehicles marked with "Ministry of Agriculture and Food" or "Government of BC" signs. Watch for survey crews making frequent stops between the hours of 7:00 a.m. to 6:00 p.m. across these regions.

This project was funded in part by the Governments of Canada and British Columbia under the Sustainable Canadian Agricultural Partnership, a federal-provincial-territorial initiative.

Click the button below here to learn more about the ALUI program.

[B.C.'s Agricultural Land Use Inventory Program](#)

Farmers' Markets Open Across the Region

Connecting Consumers and Producers Farmers' Market Guide

Farmers' and Community Market information is updated regularly in the CCAP Directory.

[Farmers' Market Guide](#)

BC Farmers' Market Trail

Northern BC Farmers' Markets that are members of the BC Association of Farmers' Markets are listed in the BC Farmers' Market Trail guide. There's an app for that! The Tasting Passport can be downloaded [here](#).

[BC Farmers' Market Trail](#)



It's Farmers' Market Season!



Please let us know what you'd like to see in the next Growing Opportunities eNewsletter!

Megan D'Arcy, Agriculture Coordinator

Phone: [250-692-0783](tel:250-692-0783)

Email: megan.darcy@rdbn.bc.ca



SEND TO A FRIEND



WEBSITE

