

SUPPLEMENTAL LETTER OF RATIONAL ZONING AMENDMENT

Proposal: The application is for the addition of cremation under the permitted uses of the Light Industrial - Contracting Zone of the Bulkley Nechako Regional District.

Rationale: There is a gap in service indicated by a 500km stretch without a crematorium within the regional district, despite a local cremation rate of 86% (statistic taken from 2019 Vital Statistics report on method of disposition), which clearly demonstrates this is a service residents are accessing elsewhere. Essential service in one's home community is always preferred.

Smithers residents are still accessing cremation services in the communities of Terrace and Vanderhoof at a rate of 86% of reported deaths, often involving the obtaining of permits to transport the deceased, purchasing transport containers and carrying out the transportation personally, which is not something many would choose.

Benefits: Lack of access to essential service is among the top reasons why families relocate out of communities (statistic taken from 2019 UBC CPD Report). Death care, in general, is essential and cremation, in particular, is essential in many cultural and religious practices as well as a logical choice for unexpected deaths that occur during winter. By amending the site specific bylaw to include cremation, room for these services to come to the valley will be made. Establishing a local crematorium, in an accessible location such as 3844 Henry Road, which addresses a current lack in service, is one way in which to attract new residents and maintain current ones.

Cemetery space is not unlimited and a crematorium has a significantly smaller footprint.

What about the Neighbours?

Much like Smithers' local funeral home residing in its downtown core, the crematorium will soon fade into the background as all buildings that were once new do.

Without visible emissions, excess noise or vehicle traffic, or a need to frequent the establishment often, the crematorium is entirely unlikely to cause any sort of disturbance to any neighbouring residences or businesses.

In Vanderhoof, BC, you'll find a crematorium existing without conflict in a commercial zone, one street off the main drag of downtown, while in Terrace, BC, you'll find a crematorium surrounded on all sides by residences. The city of Terrace confirms they have never received a complaint about the crematorium.

Potential Concerns Alleviated:

Safety Cremation equipment is subject to stringent safety standards and only equipment that holds the CSA or CUL mark can be installed with confidence. Safety of the operator, facility and community are paramount and modern cremation equipment is designed with redundant safety features to assure safety and compliance with workplace safety guidelines.

In addition, crematoriums in British Columbia are permitted by Consumer Protection BC, who have their own requirements including a facility inspection and engineer sign off on installation. Please see attached Consumer Protection BC documents, Inspection Guide and Technical Checklist and letter from equipment manufacturer.

Emissions/Environmental Factors

Modern cremation equipment is designed to reduce human or animal remains to a bone fragment state through combustion and dehydration. Combustion is the act or instance of burning. During the primary combustion the body is reduced to its molecular state (in gaseous form) and the carbon and hydrogen gasses from the body (and the hydrocarbon fuel) will be combusted a second time in a second chamber within the system. The secondary combustion allows added oxygen (as part of the overall system of "make-up" air) to connect with the carbon and hydrogen forming CO₂ and H₂O. Nitrogen, which is already present in the air we breathe, is also emitted. Obviously, perfection in combustion is impossible, but modern cremation equipment is designed to operate as close to perfection as possible. The emissions of hazardous gasses are so insignificant that they are not regulated federally (even the US EPA doesn't regulate the emissions from crematoria). A properly operated and properly maintained crematorium will far exceed provincial emission limits for all contaminants, even particulate matter (smoke). Even during an upset situation, which are incredibly uncommon, many do not know that the visible emissions are nothing more than carbon atoms that were not able to meet up with 2 oxygen atoms. Visible emissions from cremation are NOT human remains.

Considering that there are only an average of 95 Smithers residents cremated each year, the emissions will be virtually non-existent. (Statistics taken from Vital Statistic's Method of Disposition Report 2015-2019)

Disease Transmission

Because combustion transforms the body and container to its molecular state, any pathogens that may be present are completely eradicated. The cells and their proteins are broken, as is all DNA/RNA and bacteria and viruses (even prions) are broken up as well. Cremation has been proven to kill ebola, HIV, corona viruses, etc. The risk in infection comes prior to the cremation whilst handling the remains in preparation for disposition. Using universal precautions is paramount for safety and is a best practice in death care. Having a local crematorium will lessen the distance to travel to be cremated and will reduce the likelihood of transfer of pathogens.

Distaste for Deathcare

Death is emotional. There is no getting around that fact, or the fact that we all will face death eventually. Because our society tends to compartmentalize discussions of our and our loved one's inevitable demise, death care gets a bad rap. Most want to be cremated but most do not want to be reminded of that on a regular basis. Our crematorium will be forgotten about soon after it's opened because most people in our community will not need our services often and our business will be a discreet, dignified facility following all rules for safety of person, structures, environment and promote a positive perception within our community.



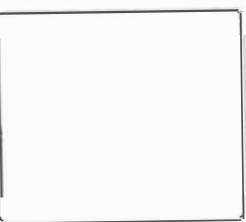
DELMISCH
DESIGN GROUP

Box 101, 2102 50th Ave. S.
Smyrna, GA 30080
Tel: 770.433.8800
Fax: 770.433.8801
WWW.DELMISCH.COM

WEST END VENTURES
3844 HENRY ROAD
SMITHERS BC
V0J 2N0

PROPOSED SITE
CONCEPT PHOTOS

LOT 3 SECTION 2
TOWNSHIP 14 RANGE 5
CO PLAN 4733



DESIGNED BY	DATE
COPIED BY	March 14, 2016
CHECKED BY	NTS
PROJECT NO.	14-577
PAGE	203
REV.	0/00/00



Unit 30 7316 Lathier Road
Smithers, BC V0J 2N0
Phone: (250) 847 6110
Fax: (250) 847 6110
WWW.DELWISCH.COM

WEST END VENTURES
3844 HENRY ROAD
SMITHERS BC
V0J 2N0

**PROPOSED SITE
CONCEPT PHOTOS**

LOT 3 SECTION 2
TOWNSHIP 1 A, RANGE 5
CD PLAN 4733

UPAWN	KO
ISSUED	March 11, 2016
SCALE	NTS
PROJECT	14-577
PAGE	202
REVISION	



Box 38, 73167 Fallow Road
 Sandstone, BC, V0J 2N0
 Phone: (250) 547-6110
 Fax: (250) 547-6111
 WWW.DELWISCH.COM

WEST END VENTURES
3844 HENRY ROAD
SMITHERS BC
V0J 2N0

PROPOSED SITE
CONCEPT PHOTOS

LOT 3 SECTION 2
 TOWNSHIP 1 A, RANGE 5
 CD PLAN #733

DATE	KO
DESIGNED	March 11, 2016
SIGNED	NTS
PROJECT	14-577
PAGE	201 OF 210

April 2, 2021

NORTH COAST CREMATION SERVICES

To the attention of Ms. Laurel Menzel;

**SUBJECT: AIR DISPERSION MODEL TO SET HEIGHT OF STACK AND SETBACK
Pyrox File # P214005**

Dear Mrs. Menzel,

Thank you for considering Pyrox industry-leading cremation equipment. The Retort Pyrox X1000 has been designed for human cremation only. The unit is gas fired, equipped with a primary burner rated 750 000 BTU and a secondary burner rated at 1.5 MBTU, discharging into the air at a nominal volumetric flow rate of 1.52 actual cubic meters per second through a stack, having an exit diameter of 50.8 cm. Maximum load capacity of the unit is 500 lbs and is rated 150-175 lbs/hr. All Pyrox units are entirely manufactured in Canada using CSA compliant components. Furthermore, our units are designed in accordance with the recommendations of the Canadian Council of the Ministry of the Environment (MOE) and meet all Canadian norms.

In Alberta, there isn't regulations regarding the height of stack above the roof and a minimum setback between the stack the property lines. However, Pyrox's engineer can calculate and document the proper setback and height of stack. Pyrox use a screening air dispersion model for the U.S. EPA, SCREEN3. The SCREEN3 model can be used to estimate worst-case ground level concentrations for a single source as well as concentrations in the cavity zone, and concentrations due to inversion break-up and shoreline fumigation.

In most Canadian provinces, total particles are regulated at points of impingement (POI) for an 24-hour averages. The POI criteria is 120µg/m³. Some provinces such as Québec, an initial concentration of total particles of 90µg/m³ is added to the highest

PYROX INDUSTRIES INC.

7575 Thimens Boulevard
Montréal, Québec
Canada, H4S 2A2

Ph.: (514) 832-1047

Fax: (514) 832-0975

www.pyrox-industries.com

Pyrox File # P214005

projected concentrations of contaminants given by the air dispersion model. The Canadian limit is 80% of the POI criteria $120\mu\text{g}/\text{m}^3$, thus $96\mu\text{g}/\text{m}^3$.

As the new cremation equipment are very performant, the expected 24-average concentration of total particles would be very low. Here is an example of an air dispersion modelling based on an existing site.

Conditions:

Building dimension of 16m x 20m

Building height of 6.25m

Stack height 8m from ground (2.25 m above roof)

Stack inside dimension of 0.508m

Max emission rate of 0.02734 g/s

Stack exit velocity fo 4.6m/s

Emission Summary Table:

Distance to POI	Maximum Concentration	$C_{\text{daily}} = C_{\text{MAX-H}} \times 0,24$	24h - Concentration	Initial Conc.	Total POI Conc.	% of Criteria $120\mu\text{g}/\text{m}^3$
m	$\mu\text{g}/\text{m}^3$		$\mu\text{g}/\text{m}^3$	$\mu\text{g}/\text{m}^3$	$\mu\text{g}/\text{m}^3$	%
20	5.717	0.24	1.37	90.00	91.37	76.1%
30	7.715	0.24	1.85	90.00	91.85	76.5%
40	7.953	0.24	1.91	90.00	91.91	76.6%
50	7.135	0.24	1.71	90.00	91.71	76.4%
60	6.223	0.24	1.49	90.00	91.49	76.2%
70	5.71	0.24	1.37	90.00	91.37	76.1%
80	5.619	0.24	1.35	90.00	91.35	76.1%
90	5.446	0.24	1.31	90.00	91.31	76.1%
100	5.252	0.24	1.26	90.00	91.26	76.1%
200	3.769	0.24	0.90	90.00	90.90	75.8%
300	2.827	0.24	0.68	90.00	90.68	75.6%
400	2.873	0.24	0.69	90.00	90.69	75.6%
500	2.643	0.24	0.63	90.00	90.63	75.5%
600	2.329	0.24	0.56	90.00	90.56	75.5%
700	2.032	0.24	0.49	90.00	90.49	75.4%
800	1.777	0.24	0.43	90.00	90.43	75.4%
900	1.563	0.24	0.38	90.00	90.38	75.3%
1000	1.386	0.24	0.33	90.00	90.33	75.3%

Conclusion:

Pyrox File # P214005

All the results are below 80% of the total particles even with the initial concentration of $90\mu\text{g}/\text{m}^3$ added to the total.

Note that in Ontario, the initial concentration of $90\mu\text{g}/\text{m}^3$ is not added to results. In this situation, results would have been between 0.0027% to 0.016% of the $120\mu\text{g}/\text{m}^3$ criteria.

Those results are specific to a project with the given conditions. Pyrox could run an air dispersion modelling based on your exact conditions if needed.

We remain available for any additional information, you may need. Thank you for considering Canadian designed and built Pyrox retorts.

Respectfully,



Sébastien Litalien, P.Eng.
General Manager
Pyrox Industries Inc.

Environment – Economy – Performance

X1000



Optional features shown

Cremation Retort for medium to large size operational center

- 🔥 Designed to perform between 4 and 5 cremations per day (average duration: 60 to 100 minutes)
- 🔥 Web-based communication system: remote troubleshooting and monitoring of cremation process using PC, tablet or smartphone
- 🔥 Turnkey installation available, including application for approval from governmental authorities & CSA
- 🔥 Customized energy recovery and filtration systems available
- 🔥 Available in two sizes:
Standard: up to 500 lbs
Oversize: up to 700 lbs

B143.9
Installed
& approved



Made in Canada

THE NEW STANDARD IN CREMATION INDUSTRY

PYROX

INDUSTRIES INC.

pyrox-industries.com

1-800-663-7954

ENVIRONMENT

Pyrox exceeds environmental requirements.



ECONOMY

Pyrox allows you to lower your operating costs.



PERFORMANCE

Pyrox operates faster and more efficiently.

BETTER PERFORMANCES

A pressure monitoring system in the primary chamber helps improving cremation performances, speed controlling and thus, reducing energy costs. Bidirectional air and gas components allows full modulation.

CREMATION TIME REDUCTION

Two (2) inlets in the primary chamber, independently monitored to reduce cremation time. Primary burner strategically positioned at an angle also reduces cremation time and virtually eliminates repositioning of the body.

AUTOMATIC OPERATION CONTROLS

Operation is made simple with easy-to-use 10" touchscreen, providing digital readout . Our proprietary software ensures optimum control & lower fuel consumption.

QUIET OPERATION

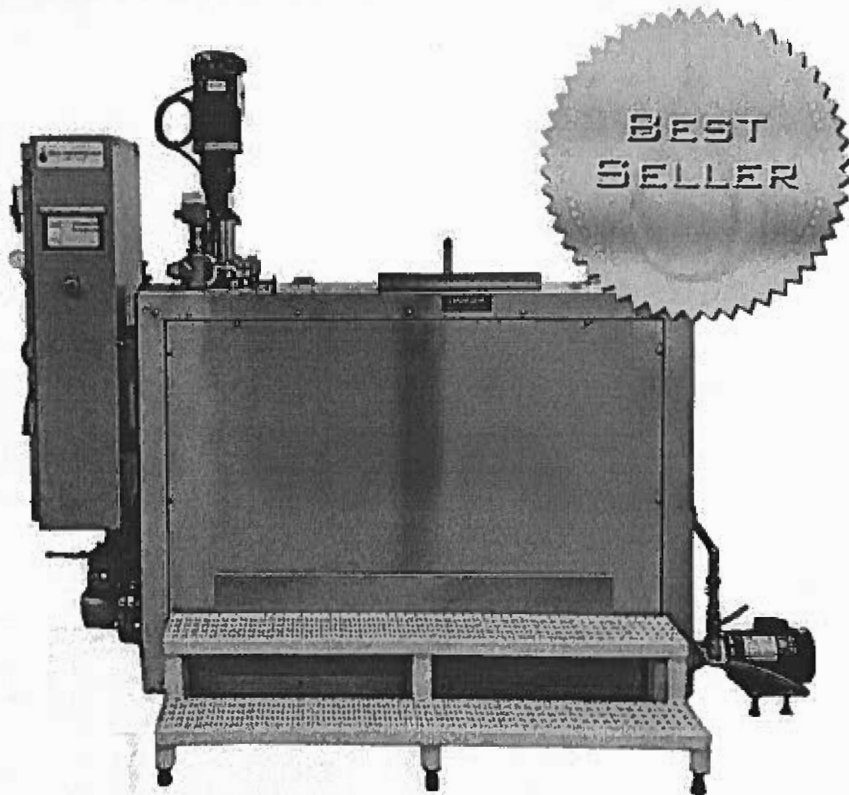
New sound enclosure allows quieter operation.

FAST ACTING FEEDER DOOR

Push button operated, with an anti-fall safety mechanism. Door is up in less than 4 seconds.

TECHNICAL SPECIFICATIONS

Overall Dimensions Without control panel and sound enclosure	500.4cm long x 223.5cm large x 299.7cm high (197" long x 88" large x 118" high)
Residence Time	> 1 second at 1,000°C
Single Load Capacity	500 lbs Max.
Burn Rate	150-165lbs/h
Maximum Burner Output	2,25MM BTU/H
Primary	0,75MM BTU/H
Secondary	1,50MM BTU/H
# of cremation on production mode	4 to 5 in 8 hrs
Average Cremation Cycle	60 to 100 minutes
Panel Location	Right, Left or Remote
Interface	10" Touch Screen Control System
Power Requirements	600V, 30A / 3 phases 240V, 60A / 3 phases
Fuel Rating	Natural, Propane, Butane, LPG
Warranty	1 year limited
Unit Weight	25,000 lbs

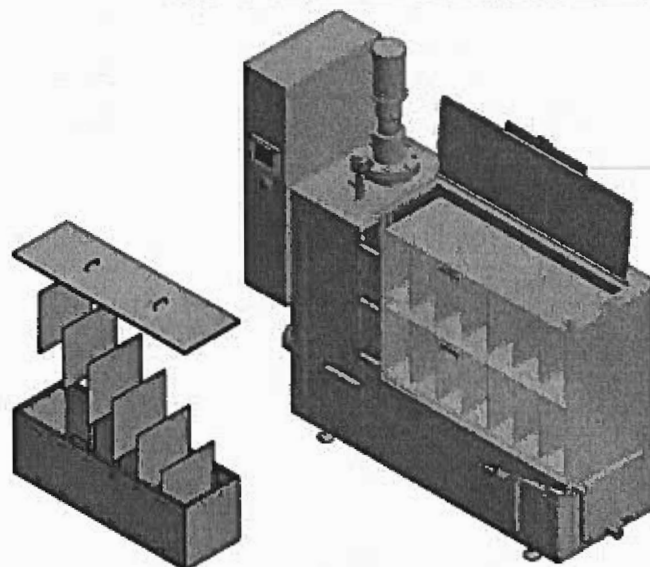
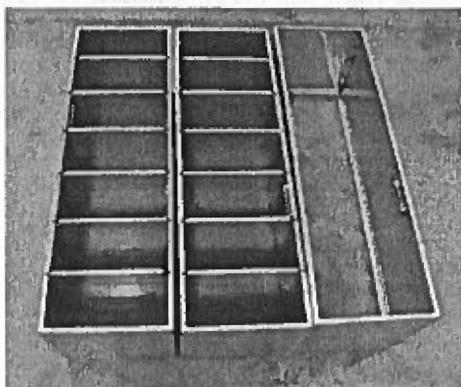
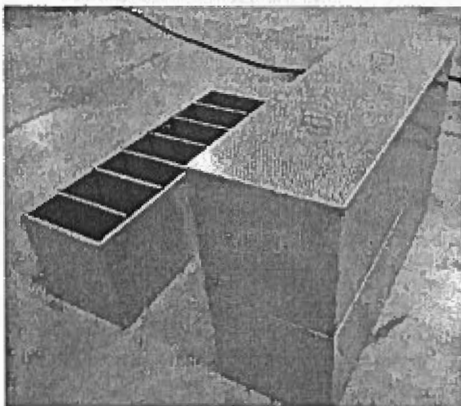


- Start the process, and leave!
- Users may run a full level or low level cycle
- The average daily labor per cycle (load, unload, process bone remains for return) is 1.5 hours

Capabilities

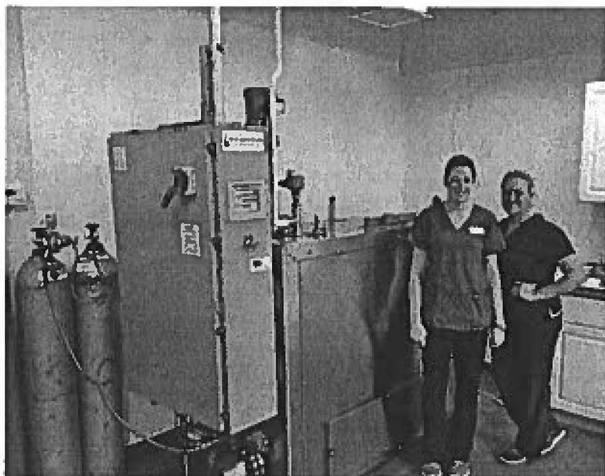
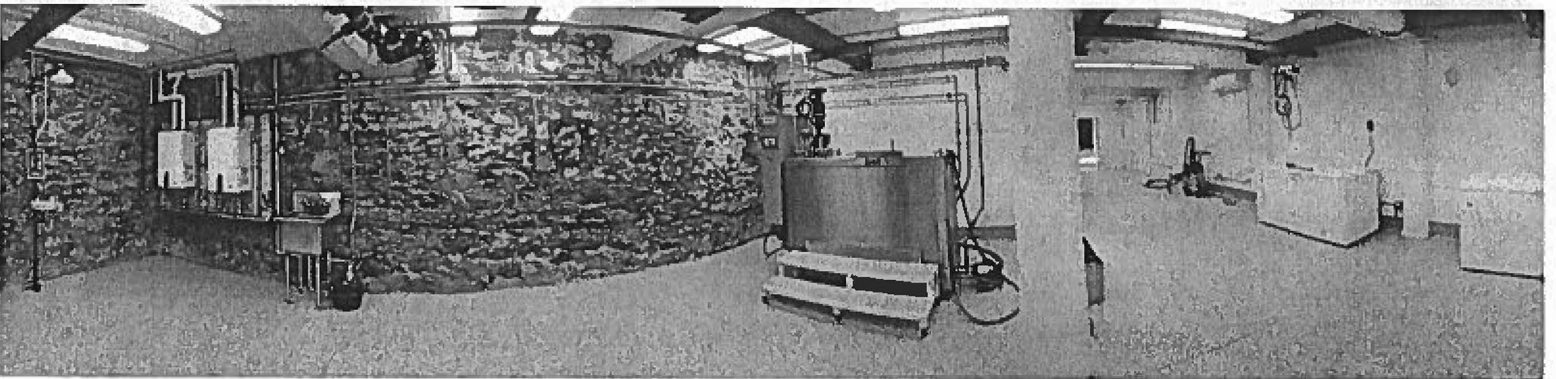
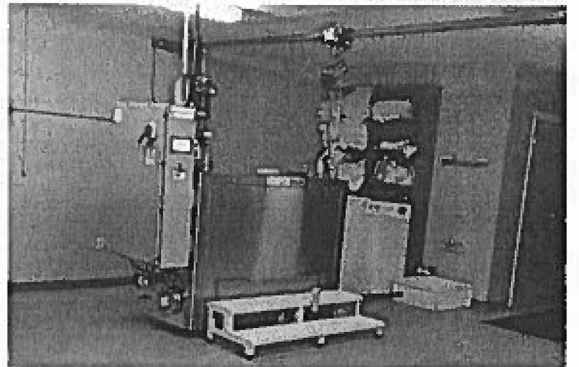
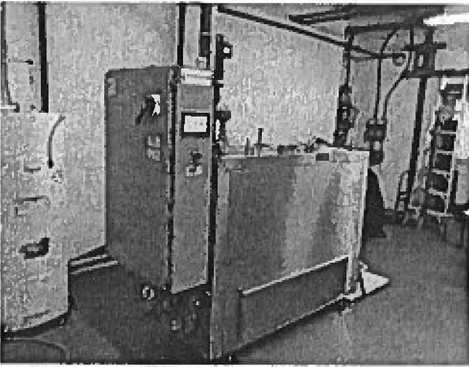
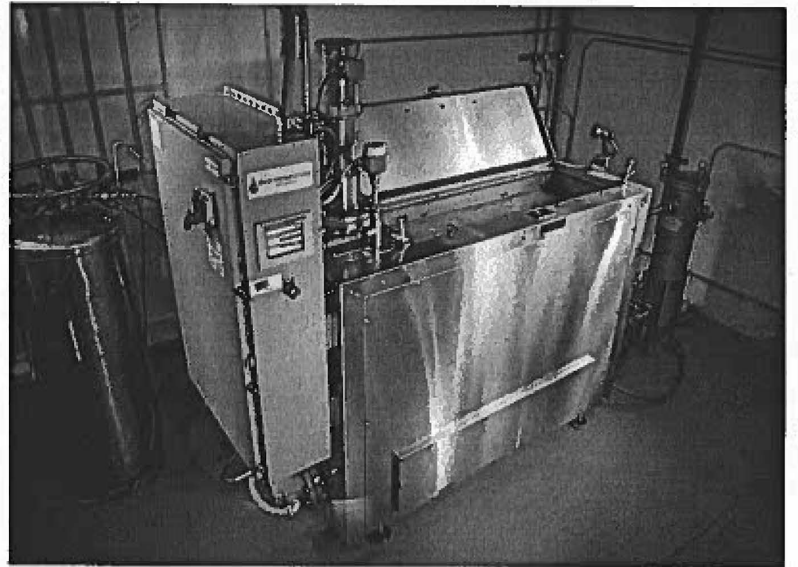
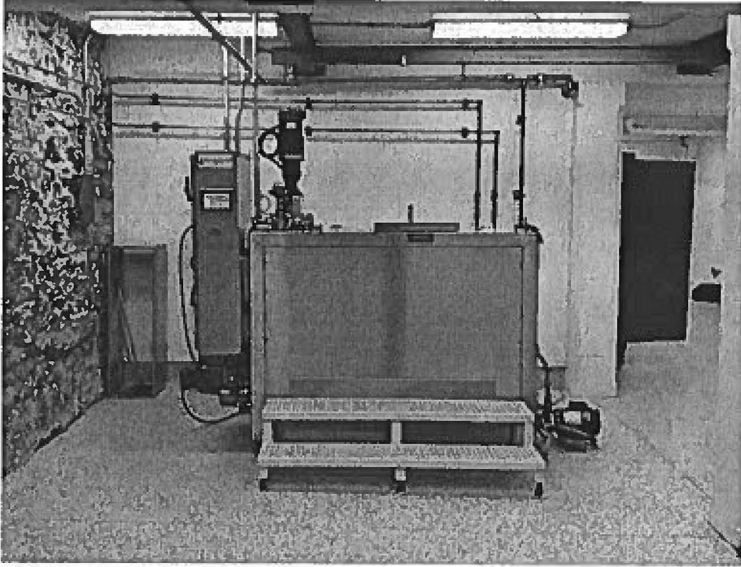
✓	Individual Pet Compartments
✓	Communal
✓	Single-Pet

- PET-400 Capacity: 1 to 400 lb (min-max)
- PET-550 Capacity: 1 to 550 lb (min-max)
- Cycle Time: 20 hours for segregated / communal cycles
12 - 20 hours for a single pet (size - dependent)
- Up to 14 compartments (two basket levels, each with seven optional compartments)
- Optional mini-compartments give up to 24 possible compartments
- User determines the size of the individual compartments
- User selects the size of the cycle (low or high)
- Can process a single-pet cycle



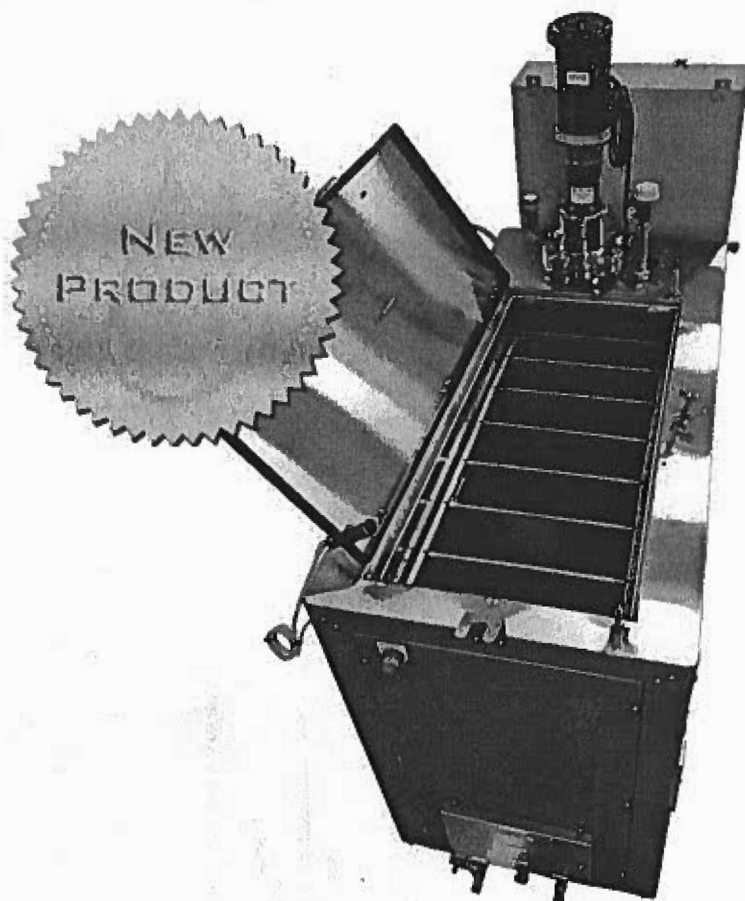
The PET-400 and PET-550 dividers can be adjusted to accommodate any size of pet. The dividers can be completely removed to process a very large pet or communal cycle. A combination cycle can be processed where select pets are placed in private compartments, while other pets share a communal space.

EXAMPLE INSTALLATIONS



PET-550

COMPARTMENT SEPARATION TECHNOLOGY



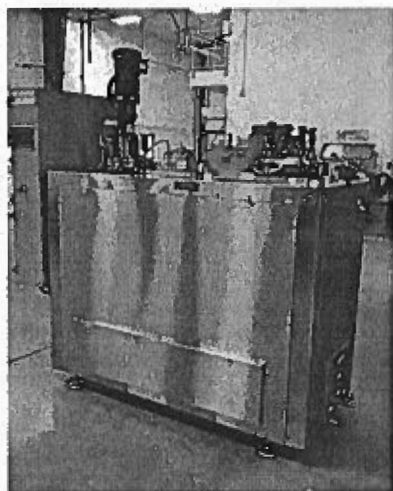
Capabilities

✓	Individual Pet Compartments
✓	Communal
✓	Single-Pet

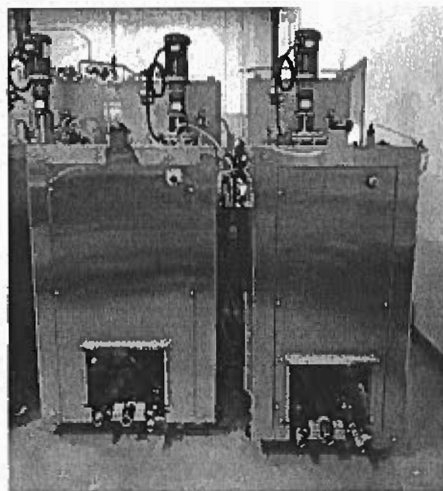
- **PET-550 Capacity:**
50 to 550 lb (min-max)
- **Cycle Time:**
20 hours for segregated / communal cycles
12 - 20 hours for a single pet (size - dependent)
- Up to 14 compartments (two basket levels, each with seven optional compartments)
- Optional mini-compartments give up to 24 possible compartments
- User determines the size of the individual compartments
- User selects the size of the cycle (low or high)
- Can process a single-pet cycle

All the benefits of the PET-400 plus more!

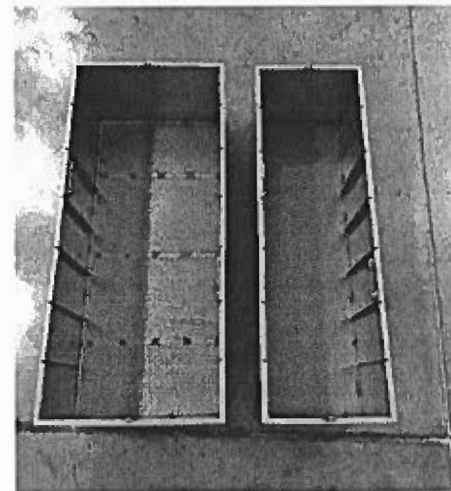
- 30% more volume than our PET-400
- Made for businesses with larger volume of animals
- 6 inches deeper front to back
- No additional room space required



PET-550




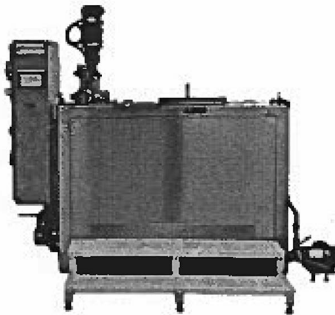
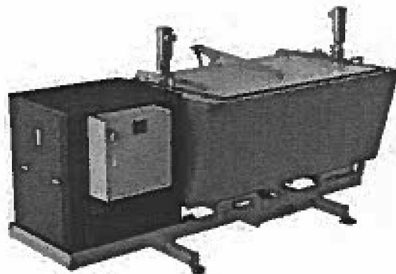
PET-550 and PET-400



PET-550 and PET-400 Baskets

Alkaline Hydrolysis Pet Systems

Features and Specs: Low Temperature Alkaline Hydrolysis Systems for Pet Dispositions

Model		Single Basket Systems	Compartment Separation Technology		Large Capacity Systems	
		<div>PET-100</div> <div></div>	<div>PET-400 PET-550</div> <div></div>		<div>S-2500 S-4000 M-2500 M-4000</div> <div></div>	
Capacity	Max	110 lb	400 lb	550 lb	2500 lb	4000 lb
	Min	1 lb	1 lb	1 lb	500 lb	750 lb
Unit Configuration		<ul style="list-style-type: none">• Single unit with mounted controls	<ul style="list-style-type: none">• Single unit with mounted controls		<ul style="list-style-type: none">• Single, large vessel with mounted controls	
Basket Configuration		<ul style="list-style-type: none">• Single basket• Single-pet (min 1lb), or communal capability	<ul style="list-style-type: none">• Two large levels of baskets for division• Single-pet (min 1lb), individual pet compartments, or communal capability		<ul style="list-style-type: none">• Unit tilts hydraulically to any angle, and lid fully opens to facilitate loading of mortalities	
Possible # of Individual Compartments		N/A	14 or 24 (option)		N/A or 84 (baskets; option)	
Turnaround Time		12-16 hours	20 hours		20 hours	
Operating Temperature		<ul style="list-style-type: none">• 199-208°F (92.5-97.8°C); User-Selected				
Operating Pressure		<ul style="list-style-type: none">• Atmospheric pressure				

Drain Temperature	<ul style="list-style-type: none"> • Automatically controlled (standard) • Discharges below regulation temperature 	
pH Control	<ul style="list-style-type: none"> • Automatic discharges below regulation pH 	
Control System	<ul style="list-style-type: none"> • Allen Bradley Micro800 color touch-screen HMI (*large capacity systems have different controls) • Allen Bradley Micrologix PLC • Intuitive operator & control screens • Manual override screen for testing and troubleshooting • Uninterruptible power supply; safety for power outage • UL-listed NEMA-4 control panel • Units available in English or Metric measures; multiple languages available • Ethernet connectivity for remote diagnostics 	
Required Utilities	<ul style="list-style-type: none"> • Drain/Sewer connection • Vent line • Fresh water supply (cold and hot water recommended) • Electricity: 208/220 Single-phase, or 208-600V 3-phase, 50 or 60 Hz <i>(large capacity units operate on steam, natural gas, or propane)</i> 	
Recommended Ancillary Equipment	<ul style="list-style-type: none"> • Scale • Remains processor (cremulator/pulverizer) • Hoist for maneuvering large pets and loaded baskets 	<ul style="list-style-type: none"> • Drying closet room or drying oven • Cooler or freezer storage unit • Eye wash station
Additional Equipment Options	<ul style="list-style-type: none"> • Option: Cycle printer • Option: Wireless connectivity • Option: CO2 or citric pH control • Option: Discharge pump 	<ul style="list-style-type: none"> • Option: Liquid chemical injection • Option: Load cells for automatic weighing • Option: Specialized filter system • Option: Remote viewing (cell phone and/or computer)
Notable Benefits	<ul style="list-style-type: none"> • Patented designs that allow processing of multiple pets, each in their own individual compartment (select models) • No expensive steam generator/boiler required • Operates with standard utilities available to most facilities • No additional storage tanks required • No submerged pump seals • Low equipment cost, simple operation, and reliability • Substantially lower operating cost than incineration/cremation • Lowest energy consumption and operational cost per disposition for alkaline hydrolysis systems • Does not require EPA Air-Quality permitting, regulation, or tracking • Does not require incinerator zoning considerations • Experienced team with 24/7 support 	



PATENTS
PENDING
PATENTS
ISSUED



BIO-RESPONSE
SOLUTIONS

Smithers & Area Recycling Society

Town of Smithers
1027 Aldous St
Smithers, BC
V0J 2N0

April 9, 2021

Re: Bylaw 1902: To Amend Bylaw 1403 to list of principal uses permitted in the M1, M2, M3 industrial zones.

Dear Town Council,

Smithers & Area Recycling Society is in support of the Laurel Menzel opening a crematory in the community of Smithers.

Not only is this service valuable to Smithers residents but also the surrounding area. Currently residents must travel or arrange transport (which is not always available) outside the community to obtain these services. This is neither convenient, nor recommended during a pandemic that has already lasted more than a year.

The proponent has demonstrated there is no significant environmental risk likely to affect neighbouring properties, therefore I see no reason to impose punitive setbacks from other zones.

This is a wonderful opportunity for the Smithers to enhance its services for our economy.

Kind regards

A handwritten signature in black ink, appearing to read 'Judy Hofsink', with a long horizontal line extending to the right.

Judy Hofsink
Administrator
Smithers and Area Recycling Society

Date: Feb. 20. 2021

Bulkley Nechako Regional District
Smithers BC V0J 2N0

Dear Board of Directors:

I am writing to voice my support of Laurel Menzel's application to provide Cremation Services for our and surrounding communities.


I work as a Registered Nurse at the Bulkley Valley District Hospital, as well as Community Nursing. In my profession I deal with death and dying on a regular basis. It is obviously a stressful experience for family and they have not often considered what to do with their loved ones remains until after the person passes. It is frequently the nurse that has been caring for the person that fields questions of what to do next and options available. Cremation is a popular and accepted choice and I would love to see that process available in our community. Currently remains are transported to Terrace or Prince George.

Personally, I had to deal with an expected death of a family member and navigated the options available. I was distress by the cost and wait times required for moving my family members remains for cremation. I would have greatly appreciated the option to do this in my community and converse with someone as knowledgeable and empathetic as Mrs. Menzel.

Laurel has been thorough in her research on the Cremation process, environmental and safety issues. Emissions are well within Health and Safety levels. It is a well researched and regulated process done within many other communities. Her proposal to add Pet Cremation services would be greatly appreciated in our community. The newer procedure she would like to offer for pets that does not involve heat is progressive and shows how the industry is advancing.

Smithers has a reputation of being a progressive community, tolerant to new ideas for expansion, and support of unique business ventures. I ask you to continue this open approach and approve North Coast Cremation Services to commence operations.

Sincerely,



Aryn Madley

Sheryl McCrea

February 22, 2021

Bulkley Nechako Regional District
Smithers, BC

ATTN: Bulkley Nechako Regional District Board of Directors

Dear Sir/Madam:

Re: Town of Smithers Zoning Bylaw No. 1403

I am writing in support of adding "crematorium" to the list of principal uses permitted in at 3844 Henry Road, Smithers, BC.

This essential service is not currently offered in our immediate area which causes undue hardship to residents when faced with the already emotional death of a loved one. Making these arrangements with a service in another location is not only stressful, but an extra cost of permits and transportation to add to their burden.

The applicant has provided ample documentation to assure the public that emissions are not a significant issue. Businesses currently operating, without the same set back requirements proposed for a crematorium, produce far more emissions. As well, the residential zone is full of wood burning stoves which produce 100x more particulate matter and emissions than the crematorium.

As a resident of the local area, and for the betterment of Smithers, I would encourage our Town's support of this essential service which is currently lacking. I would not be concerned by the crematory's proximity to the industrial, commercial, or residential zone.

Thank you for considering adding this amendment to the Regional District zoning bylaw.

Regards,

A handwritten signature in black ink, appearing to read 'Sheryl McCrea', written in a cursive style.

Sheryl McCrea

February 18, 2021

Smithers, BC

To Whom It May Concern,

Dear Board of Directors,

I am writing this letter in support of the proposal to amend Zoning Bylaw of 3844 Henry Rd, Smithers, BC to include "crematorium" to the list of principal uses permitted in some zones. I

am writing as a person who has lived in Smithers in the last 11 years and calls this town home. As well as a pet owner who had to drive to Terrace to say goodbye to their loved one. I truly believe that adding a crematorium to our town services will be of great benefit to our community. We will be able to say our farewell to our loved ones here in the place we call home. More and more people chose the option of cremation and I am excited to see that it is an option in our small but progressive town.

Regards,

ElenaRaykov

Bulkley Nechako Regional District

Dear Board of Directors:

As a business owner and long-time resident of the Bulkley Valley, I believe a Crematorium is needed in our community. As more people opt for cremation every year, it makes sense to provide that service locally. From a moral, economical and environmental stand point. I personally would not want to have my loved one transported to Terrace or Prince George after their passing. Or be shipped to an overly industrialized zone. The applicant has provided evidence that the emissions are negligible, much less than the drive to another community would be. Also, I and many others I know, would love to have the affordable and local option of pet cremation instead of backyard burials. Please approve the request.

Thank you,
Julie Saunders
Telkwa Strength and Fitness

Jenya Zandberg

August 18, 2021

Bulkley Nechako Regional District Board of Directors

Dear Board of Directors,

I would like to express my support on the initiated amendment to the Zoning Bylaw at the address 3844 Henry Road, Smithers, BC V0J 2N2 to include crematorium use. As a resident, I am not concerned about emissions as long as the crematorium is properly designed, operated, monitored and maintained. Furthermore, cremation is an essential service that this community currently lacks.

Sincerely,

A handwritten signature in black ink that reads "Jenya Zandberg". The script is cursive and fluid, with the first letters of the first and last names being capitalized and prominent.

Jenya Zandberg

August 23, 2021

Bulkley Nechako Regional District Board of Directors,

I am writing this letter in support of the application for a Crematorium to be built and operated in Smithers. As anyone knows who has lost someone close to them, it is an extremely difficult time and making arrangements to fill their loved ones wishes only adds to the stress.

On June 28th my husband passed away. It was my husband's wishes to be cremated and have his ashes placed in the columbarium at the Smithers Cemetery. Although this is classified as an essential service, Smithers is not able to provide this service. In order to follow through with my husband's wishes, my children and I had to make arrangements to have him cremated in Vanderhoof. The cost to transport the body one way (milage only) was \$350. Not only was this extremely costly but there was a worry that something could possibly go wrong and a challenge to have my husband returned in time for the celebration of life.

I believe Smithers and the residents in our community would benefit from a crematorium. I am in full support of the crematorium!

Sincerely,

KEhalt

Kelly M Ehalt

September 1, 2021

Re: Support for the proposed Crematorium project, Smithers B.C.

To whom it may concern,

I am writing this letter, after much research into Crematoriums, in full support of the proposed new business venture that Laurel Menzel has brought forward to the Town of Smithers. I think this service is missing from our area and could be hugely beneficial for residents of the valley and surrounding communities to utilize for years to come. I personally cannot imagine having the added stress and not to mention cost, added on after a loved one passed, of having to drive 2.5 hours (minimum) to another community to obtain the benefits of this much needed service. It is a morbid topic and obviously makes people uncomfortable but that does not take away the huge demand we, as residents of the Bulkley Valley, have for this service.

I personally looked into getting my canine cremated after he unfortunately passed and it was more cost effective to pay to have him humanely put down at the vet, hire a local contractor to dig a hole on our property and then bury him. And let me tell you, this was not cheap. This is just one example that shows how needed this service is. The fact that it will benefit people with loved ones who pass AND people with furry family friends that pass is HUGE!

I have a close family friend that lives near the crematorium in Terrace, BC. This friend was more than willing to answer my questions before I chose to write this letter and she stated the following: "you don't even know it is there, it just looks like a regular building, I have never noticed a foul smell or a change in air quality due to it being in existence."

I think that if Smithers is denied the opportunity to have this business be of service to our area, we are being let down.

Crematorium aside, businesses bring in revenue to our communities. Revenue ensures that upgrades and community projects get green lights down the road. If Smithers council doesn't choose to start being more accepting and helpful with these new ideas and ventures, I am worried what the fate of the town and its success will be. The goal should be to keep people shopping and spending local. If they have to continue to source resources elsewhere that are unavailable to them here, WE are all losing out!

Please take this letter and my strong thoughts and opinions stated above as my full support for Laurel Menzel's suggested project of a new Crematorium in Smithers!!

Thank you for your time,

Sincerely,



Erin Colebank

Smithers B.C.

Jill McDonald

February 16th 2021

Regional District of Bulkley Nechako
Burns Lake, BC

Dear Regional District of Bulkley Nechako:

I am writing this letter in support of a zoning bylaws amendment to include crematorium in the list of principal uses at the suggested property.

My family and I know first-hand how hard it is to have to leave town to use this service. The transport of a loved one, our child, the drop off and wait time wander Terrace streets before picking him up. Having to organizing every fine detail on our own due to not having a local service to take care of it for us. Back and forth with the hospital, doctors office and access center to file forms, release him from the morgue, transporting him in the back seat of our personal vehicle, bring him to the crematorium, physically having to put him into the "fire" and then wait the painstaking amount of time to pick our son up. All the while being three days post-delivery!

I cannot explain the pain a family feels losing a child at birth to then have to arrange all details for his peaceful preservation.

I know I don't stand alone in feeling that our community would benefit from having this service locally. Please take into consideration my families personal, firsthand experience with the lack of service our community could provide at our most dark time of need.

Sincerely,

Jill McDonald