

## Zoning Bylaw 1800, 2020

### Schedule "B" Zoning Map Series Electoral Area "C"

Produced by the Regional District of Bulkley-Nechako

#### Zoning

- |   |   |                                      |
|---|---|--------------------------------------|
| Single Family Residential (R1)                        | Small Holdings (H1)                                 | Strata Resort Commercial (C4)        |
| Multi Family Residential (R2)                         | Small Holdings - Additional Dwelling (H1A)          | Light Industrial (M1)                |
| Waterfront Residential I (R3)                         | Small Holdings - Industrial Shop (H1B)              | Light Industrial - Contracting (M1A) |
| Waterfront Residential II (R4)                        | Large Holdings (H2)                                 | Heavy Industrial (M2)                |
| Country Residential (R5)                              | Agricultural (Ag)                                   | Agricultural Industry (H3)           |
| Rural Residential (R6)                                | Rural Resource (RR1)                                | Civic/Institutional (P1)             |
| Manufactured Home Park (R7)                           | General Commercial (C1)                             | Special Civic/Institutional (P1A)    |
| Hudson Bay Mountain Recreational Residential (R8)     | Local Commercial (C1A)                              | Recreation (P2)                      |
| Hudson Bay Mountain Single Family Residential (R9)    | Highway Commercial (C2)                             | Special Recreation (P2A)             |
| Hudson Bay Mountain Multiple Family Residential (R10) | Highway Commercial - Manufactured Home Dealer (C2A) | Airport (A1)                         |
| Bare Land Strata Residential (R11)                    | Tourist Commercial (C3)                             | Wind Farm (WF)                       |

#### Other Features

- Municipalities
- Electoral Areas
- Cadastre
- Federal Indian Reserves

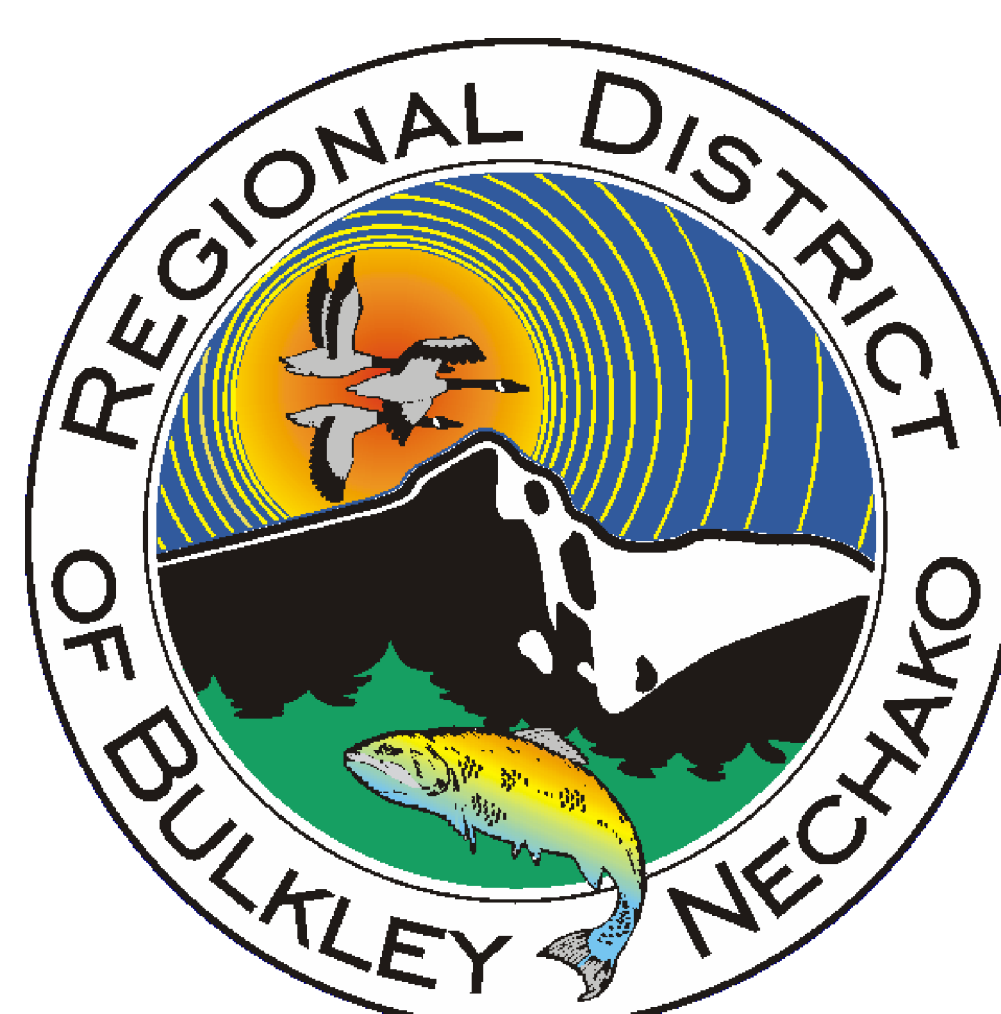
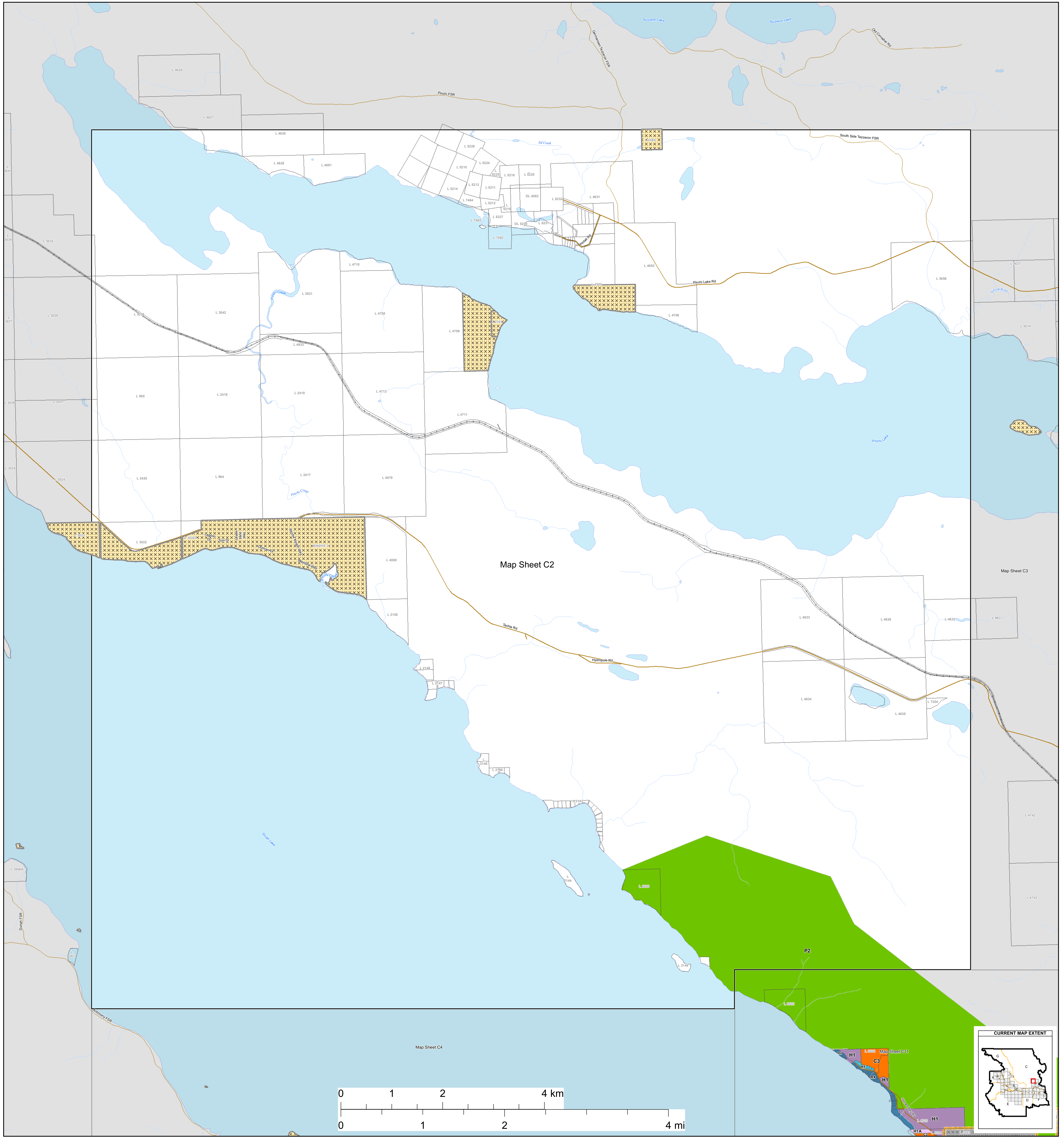
#### Transportation

- Street
- Highway
- Ferry
- FSR
- Secondary Road
- Railroad

REV	DESCRIPTION	DATE	APPROVED	AREAS AFFECTED	REVISIONS
1	Amendment 1349	Jun 24 2021		1 (C Index), 4 (C4), 5 (C5), 11 (C11)	
2	Amendment 1315	Aug 11 2022		1 (C Index), 4 (C4), 5 (C5), 11 (C11)	

I hereby certify that this is schedule "B" of Bylaw No. 1800, 2020 (Electoral Area "C" map book)  
 [Signature] August 11, 2022  
 District Administrator





# Zoning Bylaw 1800, 2020 Schedule "B" Zoning Map Series Electoral Area "C"

### Zoning

- Single Family Residential (R1)
- Multiple Family Residential (R2)
- Waterfront Residential I (R3)
- Waterfront Residential II (R4)
- Country Residential (R5)
- Rural Residential (R6)
- Manufactured Home Park (R7)
- Hudson Bay Mountain Recreational Residential (R8)
- Hudson Bay Mountain Single Family Residential (R9)
- Hudson Bay Mountain Multiple Family Residential (R10)
- Bare Land Strata Residential (R11)
- Small Holdings (H1)
- Small Holdings - Additional Dwelling (H1A)
- Small Holdings - Industrial Shop (H1B)
- Large Holdings (H2)
- Agricultural (Ag1)
- Rural Resource (RR1)
- General Commercial (C1)
- Local Commercial (C1A)
- Highway Commercial (C2)
- Highway Commercial - Manufactured Home Dealer (C2A)
- Tourist Commercial (C3)
- Strata Resort Commercial (C4)
- Light Industrial (M1)
- Light Industrial - Contracting (M1A)
- Heavy Industrial (M2)
- Agricultural Industry (M3)
- Civic/Institutional (P1)
- Special Civic/Institutional (P1A)
- Recreation (P2)
- Special Recreation (P2A)
- Airport (A1)
- Wind Farm (WF)

### Other Features

- Municipalities
- Electoral Areas
- Cadastre
- Federal Indian Reserves

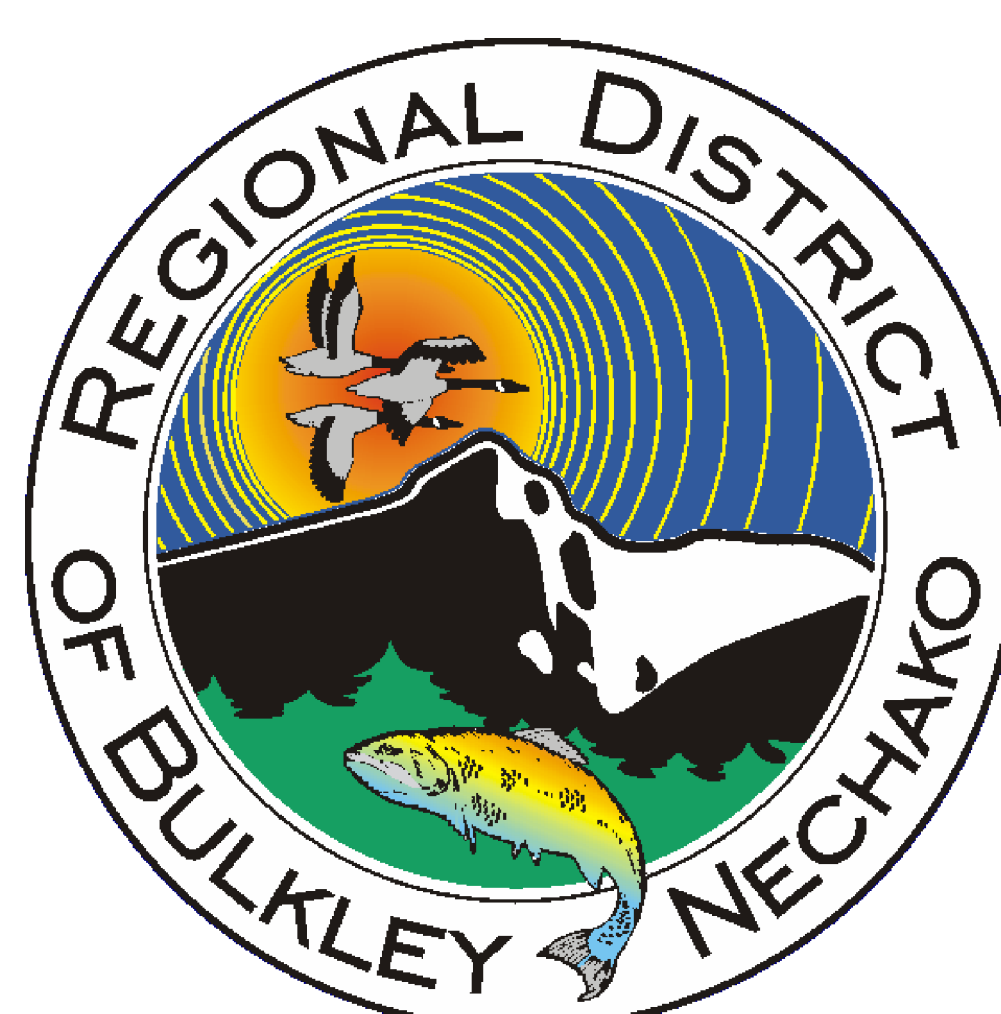
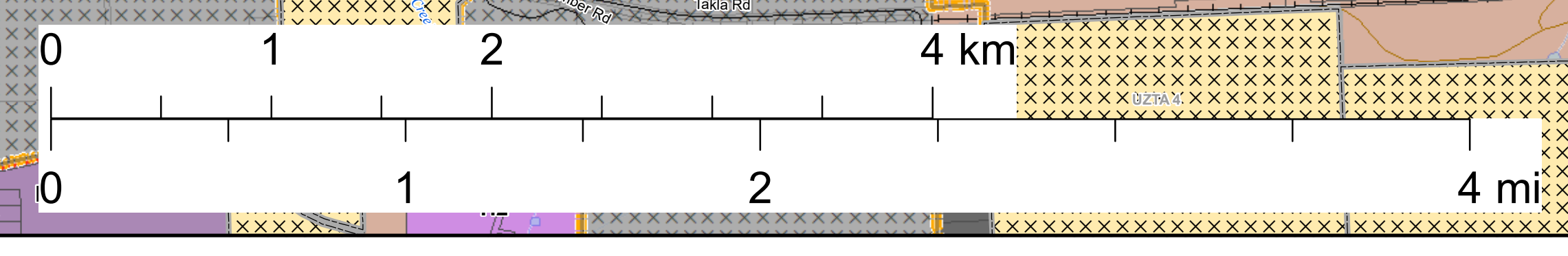
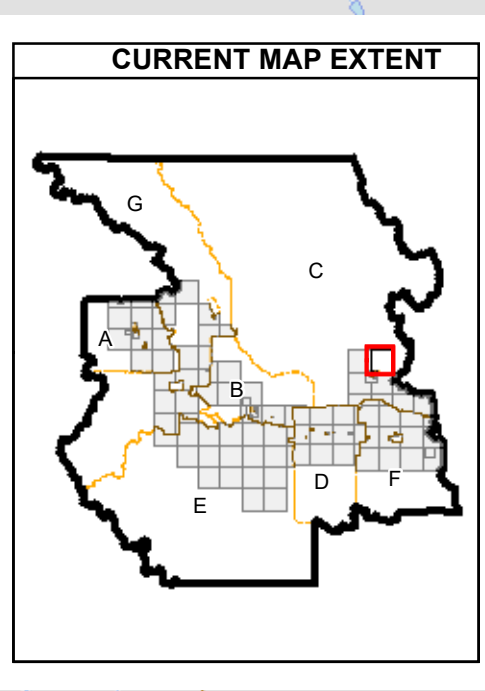
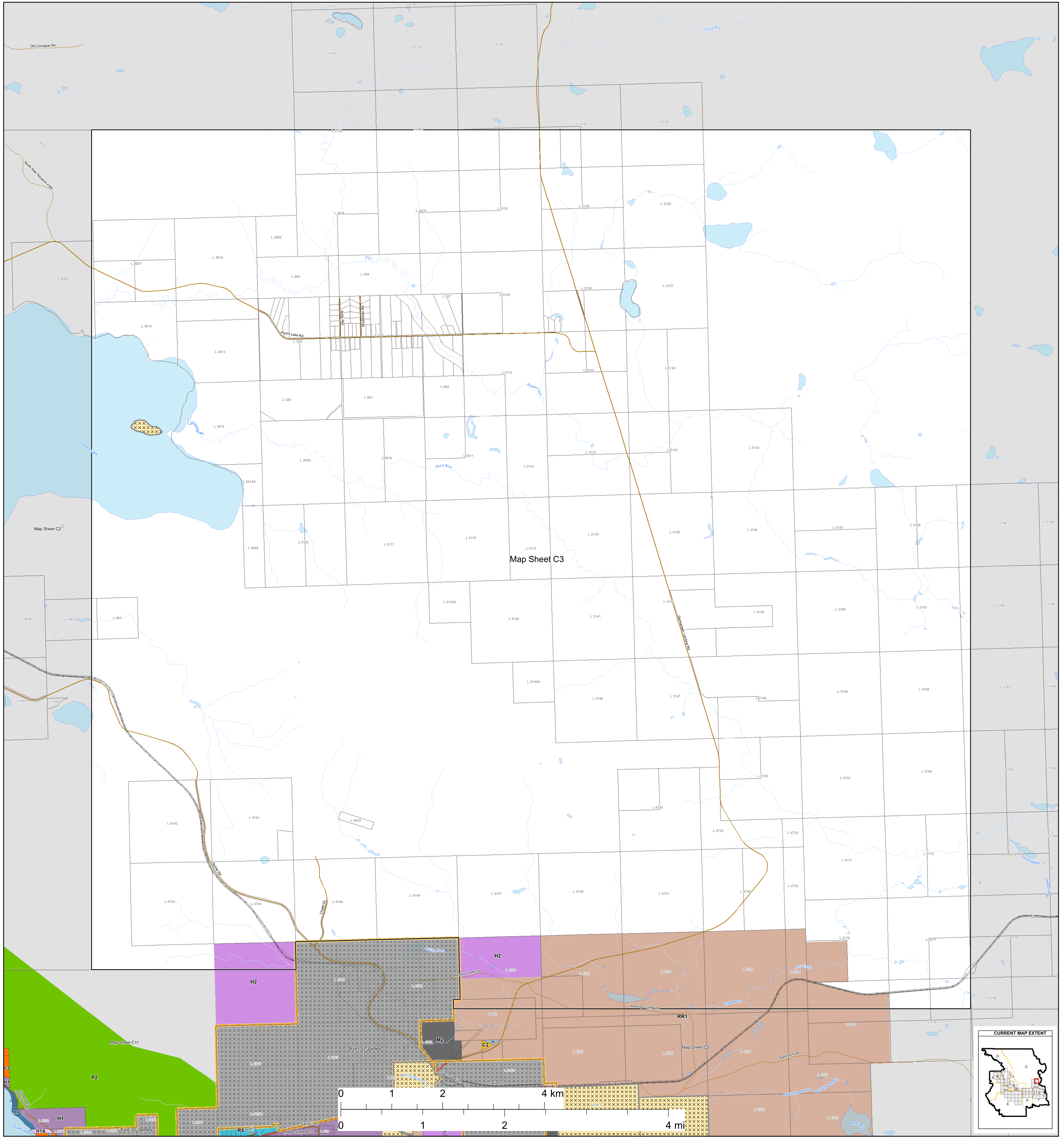
### Transportation

- Street
- Highway
- Ferry
- FSR
- Secondary Road
- Railways

REVISIONS			
REV	DESCRIPTION	DATE	APPROVED

Produced by the Regional District of Bulkley-Nechako





# Zoning Bylaw 1800, 2020

## Schedule "B"

### Zoning Map Series

#### Electoral Area "C"

#### Zoning

- Single Family Residential (R1)
- Small Holdings (H1)
- Strata Resort Commercial (C4)
- Multiple Family Residential (R2)
- Small Holdings - Additional Dwelling (H1A)
- Light Industrial (M1)
- Waterfront Residential I (R3)
- Small Holdings - Industrial Shop (H1B)
- Light Industrial - Contracting (M1A)
- Waterfront Residential II (R4)
- Large Holdings (H2)
- Heavy Industrial (M2)
- Country Residential (R5)
- Agricultural (Ag1)
- Agricultural Industry (M3)
- Rural Residential (R6)
- Rural Resource (RR1)
- Civic/Institutional (P1)
- Rural Resource (RR1)
- General Commercial (C1)
- Special Civic/Institutional (P1A)
- Manufactured Home Park (R7)
- Local Commercial (C1A)
- Recreation (P2)
- Hudson Bay Mountain Recreational Residential (R8)
- Highway Commercial (C2)
- Special Recreation (P2A)
- Hudson Bay Mountain Single Family Residential (R9)
- Highway Commercial - Manufactured Home Dealer (C2A)
- Airport (A1)
- Hudson Bay Mountain Single Family Residential (R10)
- Tourist Commercial (C3)
- Wind Farm (WF)
- Bare Land Strata Residential (R11)

#### Other Features

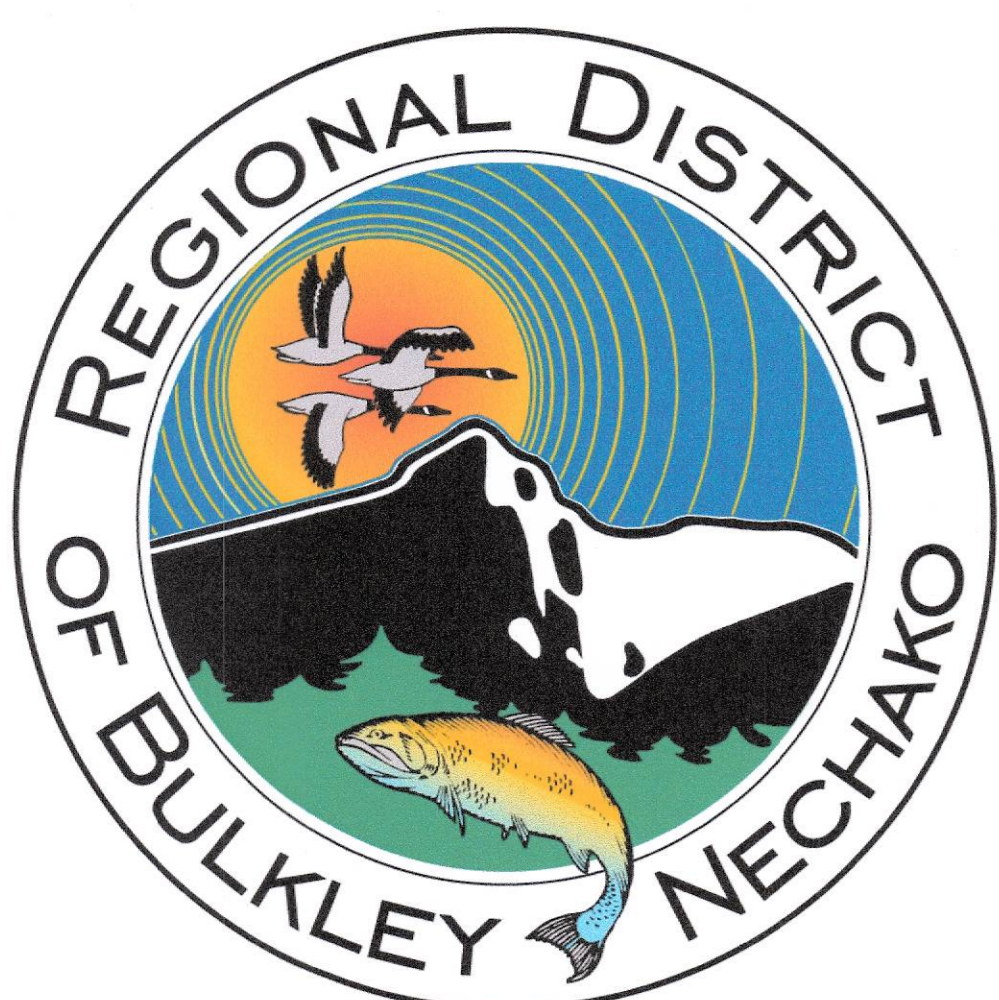
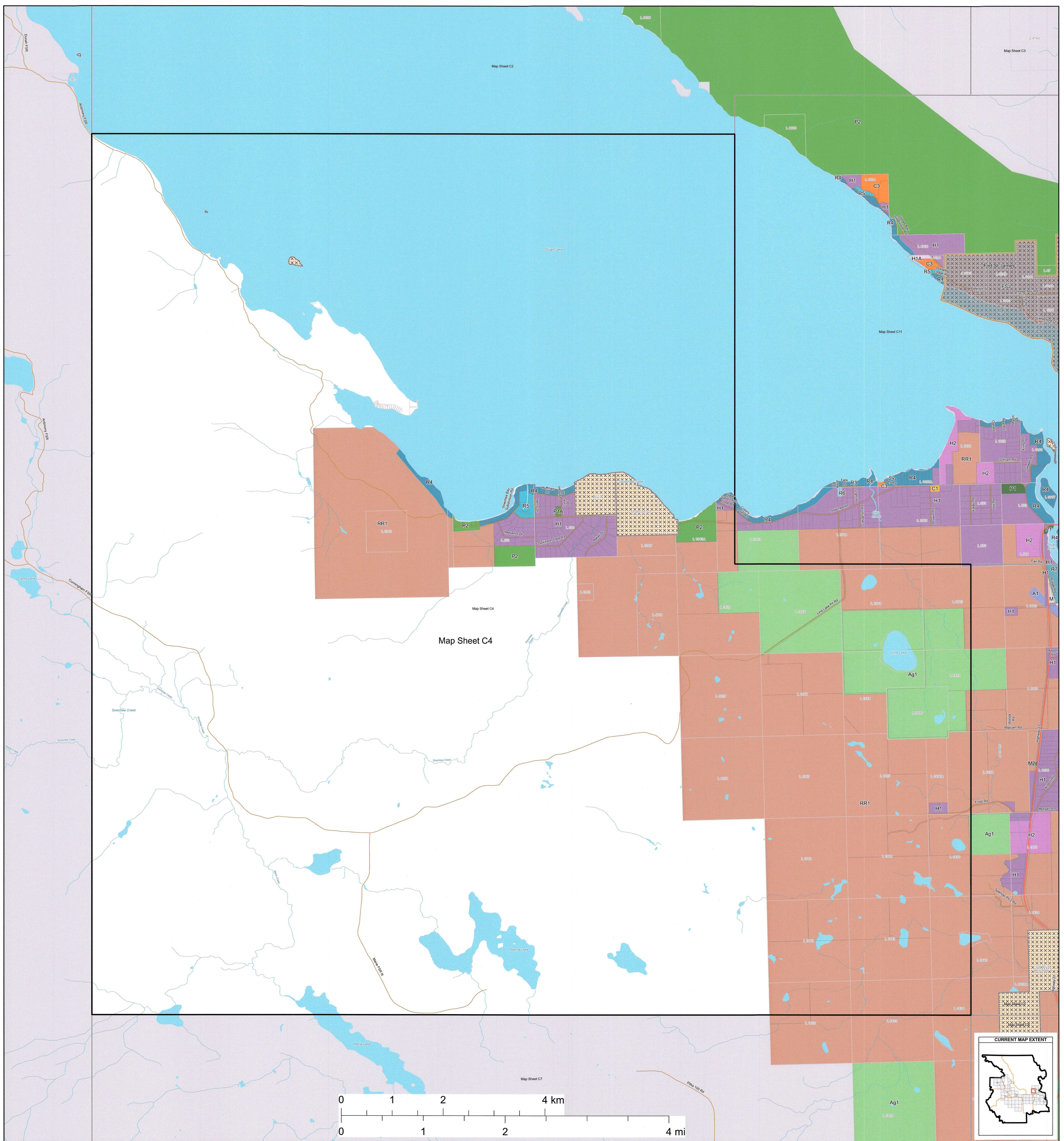
- Municipalities
- Electoral Areas
- Cadastre
- Federal Indian Reserves

#### Transportation

- Street
- Highway
- Ferry
- FSR
- Secondary Road
- Railways

REVISIONS			
REV	DESCRIPTION	DATE	APPROVED





# Zoning Bylaw 1800, 2020

## Schedule "B" Zoning Map Series Electoral Area "C"

Produced by the Regional District of Bulkley-Nechako

### Zoning

- Single Family Residential (R1)
- Multi Family Residential (R2)
- Waterfront Residential 1 (R3)
- Waterfront Residential II (R4)
- Country Residential (R5)
- Rural Residential (R6)
- Manufactured Home Park (R7)
- Hudson Bay Mountain Recreational Residential (R8)
- Hudson Bay Mountain Single Family Residential (R9)
- Hudson Bay Mountain Multiple Family Residential (R10)
- Bare Land Strata Residential (R11)
- Small Holdings (H1)
- Small Holdings - Additional Dwelling (H1A)
- Small Holdings - Industrial Shop (H1B)
- Large Holdings (H2)
- Agricultural (Ag1)
- Rural Resource (RR1)
- General Commercial (C1)
- Local Commercial (C1A)
- Highway Commercial (C2)
- Highway Commercial - Manufactured Home Dealer (C2A)
- Tourist Commercial (C3)
- Strata Resort Commercial (C4)
- Light Industrial (M1)
- Light Industrial - Contracting (M1A)
- Heavy Industrial (M2)
- Agricultural Industry (M3)
- Civic/Institutional (P1)
- Special Civic/Institutional (P1A)
- Recreation (P2)
- Special Recreation (P2A)
- Airport (A1)
- Wind Farm (WF)

### Other Features

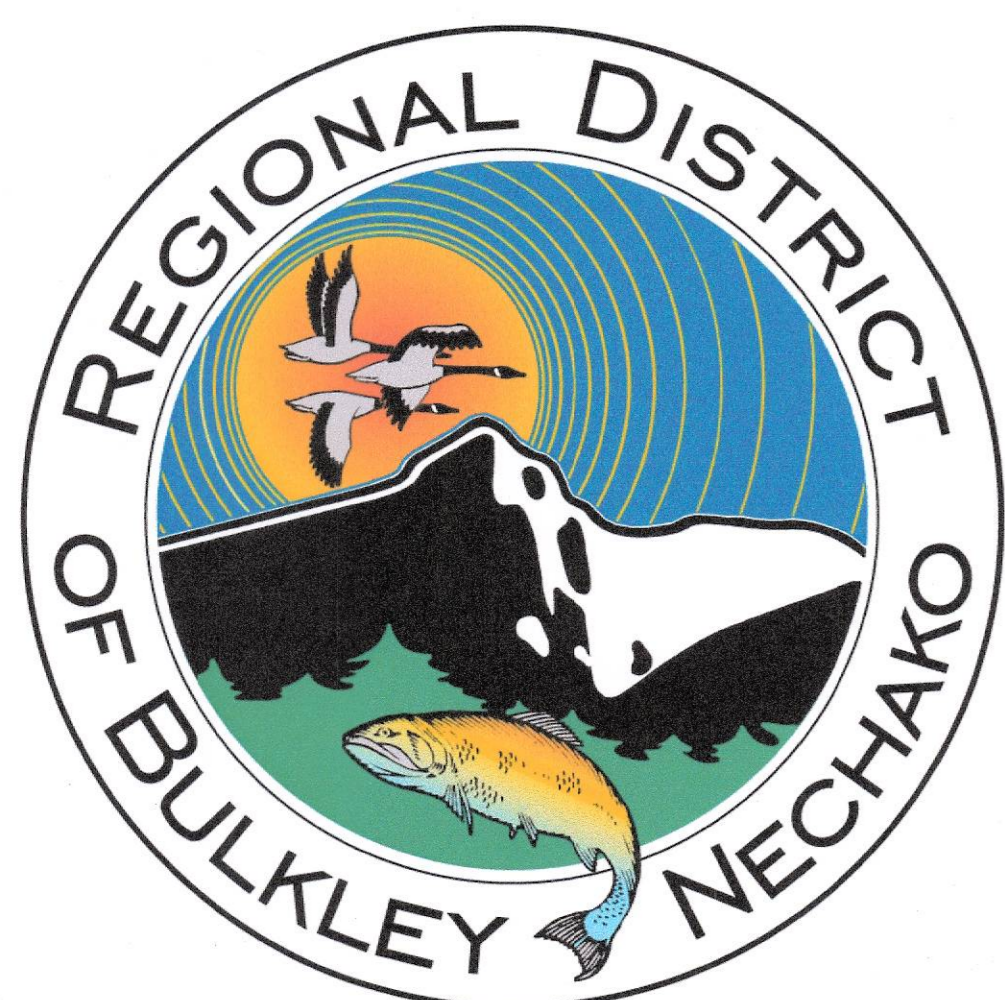
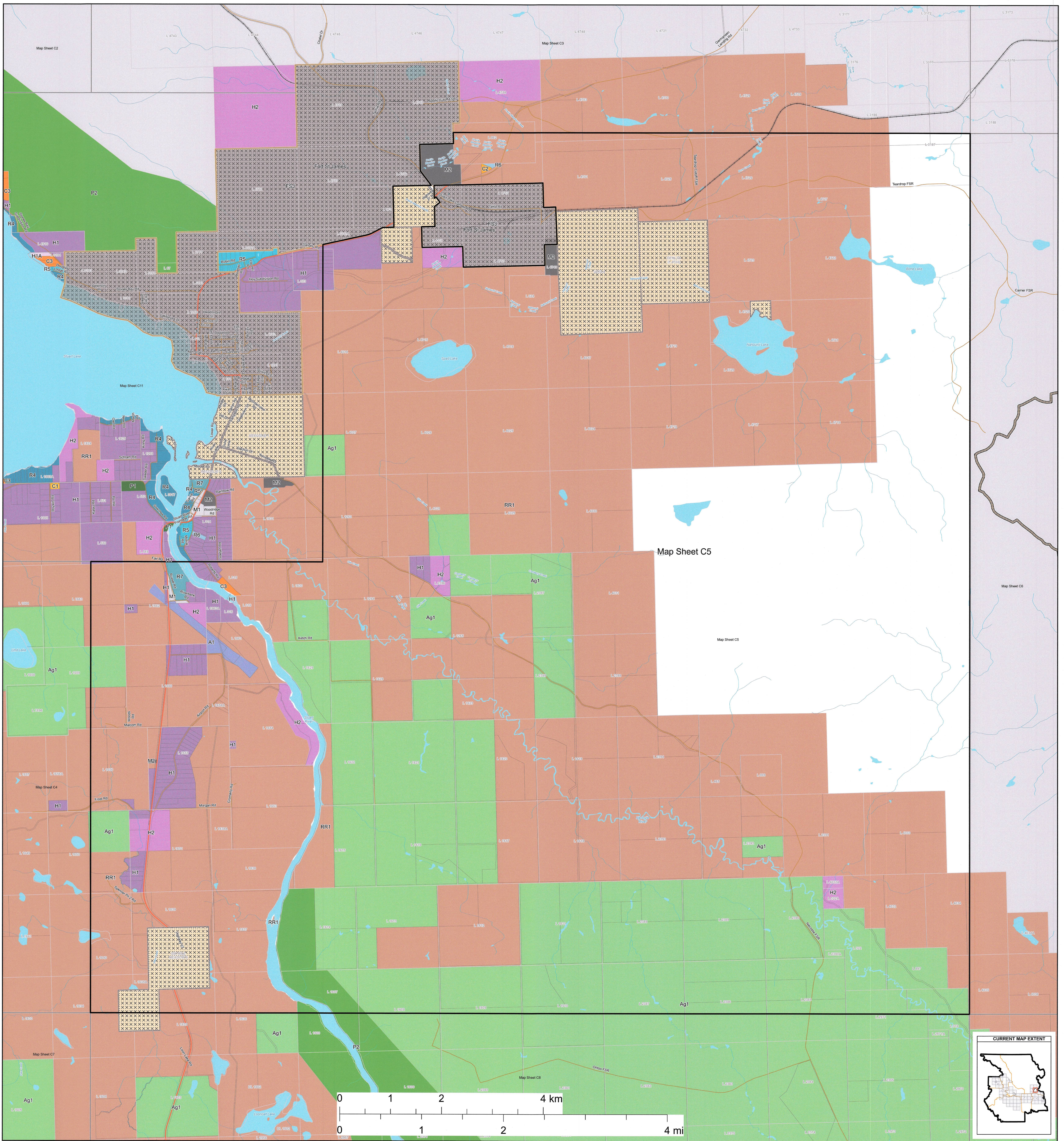
- Municipalities
- Electoral Areas
- Cadastre
- Federal Indian Reserves

### Transportation

- Street
- Highway
- Ferry
- FSR
- Secondary Road
- Railroad

REV	DESCRIPTION	DATE	APPROVED
1	Amendment 1948	Jan 24 2023	
2	Amendment 1915	Aug 11 2022	





# Zoning Bylaw 1800, 2020

## Schedule "B" Zoning Map Series Electoral Area "C"

Produced by the Regional District of Bulkley-Nechako

### Zoning

- Single Family Residential (R1)
- Multi Family Residential (R2)
- Waterfront Residential 1 (R3)
- Waterfront Residential 1 (R4)
- Country Residential (R5)
- Rural Residential (R6)
- Manufactured Home Park (R7)
- Hudson Bay Mountain Recreational Residential (R8)
- Hudson Bay Mountain Single Family Residential (R9)
- Hudson Bay Mountain Multiple Family Residential (R10)
- Bare Land Strata Residential (R11)
- Small Holdings (H1)
- Small Holdings - Additional Dwelling (H1A)
- Small Holdings - Industrial Shop (H1B)
- Large Holdings (H2)
- Agricultural (Ag1)
- Rural Resource (RR1)
- General Commercial (C1)
- Local Commercial (C1A)
- Highway Commercial (C2)
- Highway Commercial - Manufactured Home Dealer (C2A)
- Tourist Commercial (C3)
- Strata Resort Commercial (C4)
- Light Industrial - Contracting (M1A)
- Light Industrial - Manufacturing (M1B)
- Heavy Industrial (M2)
- Agricultural Industry (I1)
- Civic/Institutional (P1)
- Special Civic/Institutional (P1A)
- Recreation (P2)
- Special Recreation (P2A)
- Airport (A1)
- Wind Farm (WF)

### Other Features

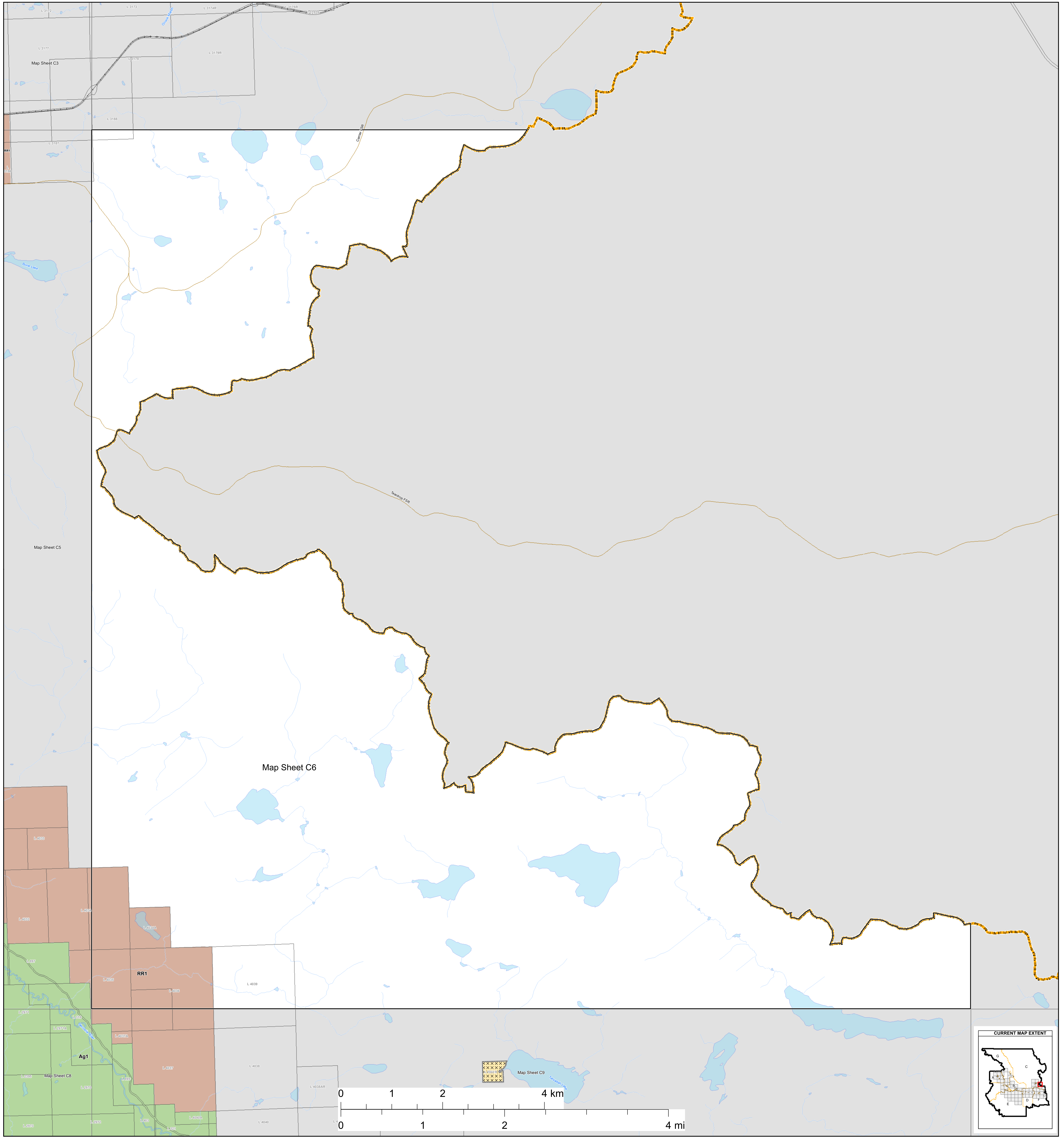
- Municipalities
- Electoral Areas
- Cadastre
- Federal Indian Reserves

### Transportation

- Street
- Highway
- Ferry
- FSR
- Secondary Road
- Railroad

REV	DESCRIPTION	DATE	APPROVED	REVISIONS
1	Amendment 1948	Jun 24 2021		
2	Amendment 1915	Aug 11 2022		





**Zoning Bylaw 1800, 2020**  
**Schedule "B"**  
**Zoning Map Series**  
**Electoral Area "C"**

Produced by the Regional District of Bulkley-Nechako

**Zoning**

- Single Family Residential (R1)
- Multiple Family Residential (R2)
- Waterfront Residential I (R3)
- Waterfront Residential II (R4)
- Country Residential (R5)
- Rural Residential (R6)
- Manufactured Home Park (R7)
- Hudson Bay Mountain Recreational Residential (R8)
- Hudson Bay Mountain Single Family Residential (R9)
- Hudson Bay Mountain Multiple Family Residential (R10)
- Bare Land Strata Residential (R11)
- Small Holdings (H1)
- Small Holdings - Additional Dwelling (H1A)
- Small Holdings - Industrial Shop (H1B)
- Large Holdings (H2)
- Agricultural (Ag1)
- Rural Resource (RR1)
- General Commercial (C1)
- Local Commercial (C1A)
- Highway Commercial (C2)
- Highway Commercial - Manufactured Home Dealer (C2A)
- Tourist Commercial (C3)
- Strata Resort Commercial (C4)
- Light Industrial (M1)
- Light Industrial - Contracting (M1A)
- Heavy Industrial (M2)
- Agricultural Industry (M3)
- Civic/Institutional (P1)
- Special Civic/Institutional (P1A)
- Recreation (P2)
- Special Recreation (P2A)
- Airport (A1)
- Wind Farm (WF)

**Other Features**

- Municipalities
- Electoral Areas
- Cadastral
- Federal Indian Reserves

**Transportation**

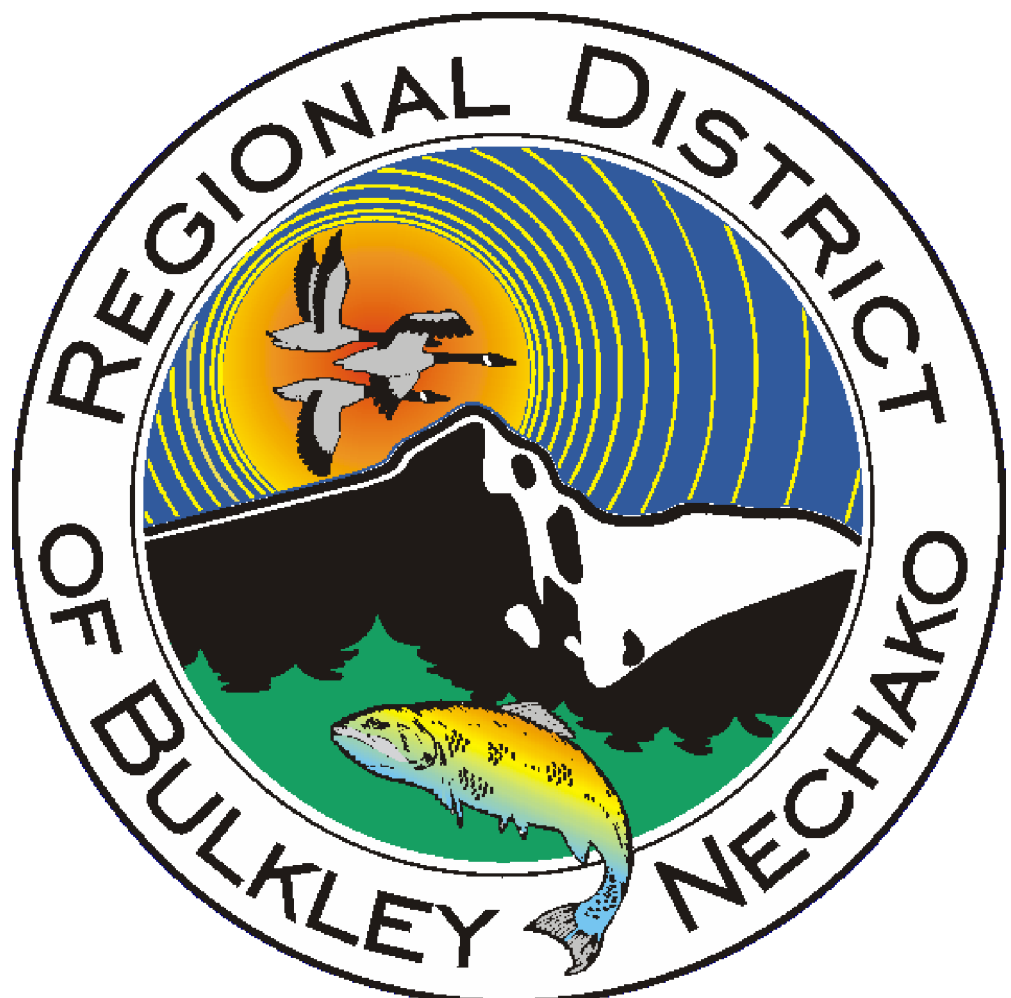
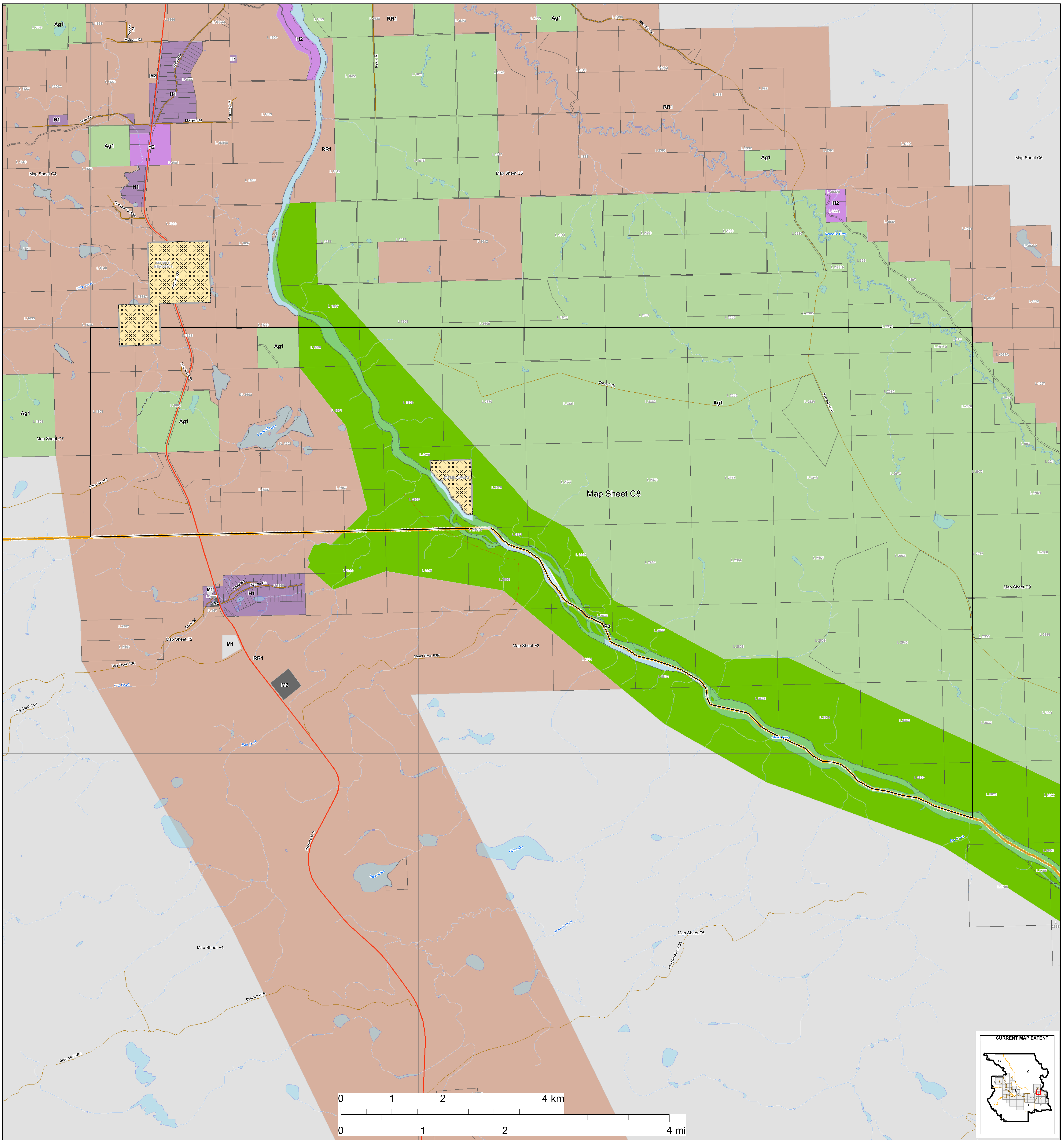
- Street
- Highway
- Ferry
- FSR
- Secondary Road
- Railways

REVISEMENTS			
REV	DESCRIPTION	DATE	APPROVED









# Zoning Bylaw 1800, 2020

## Schedule "B"

### Zoning Map Series

#### Electoral Area "C"

Produced by the Regional District of Bulkley-Nechako

#### Zoning

- Single Family Residential (R1)
- Multiple Family Residential (R2)
- Waterfront Residential I (R3)
- Waterfront Residential II (R4)
- Country Residential (R5)
- Rural Residential (R6)
- Manufactured Home Park (R7)
- Hudson Bay Mountain Recreational Residential (R8)
- Hudson Bay Mountain Single Family Residential (R9)
- Hudson Bay Mountain Multiple Family Residential (R10)
- Bare Land Strata Residential (R11)

#### Other Features

- Municipalities
- Electoral Areas
- Cadastral
- Federal Indian Reserves

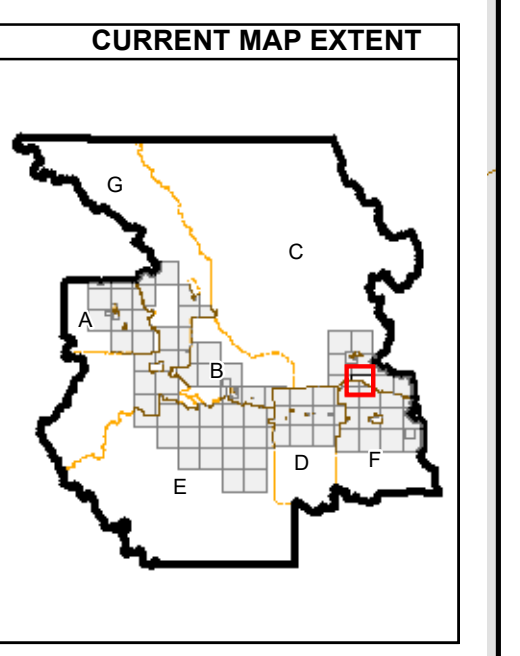
- Small Holdings (H1)
- Small Holdings - Additional Dwelling (H1A)
- Small Holdings - Industrial Shop (H1B)
- Large Holdings (H2)
- Agricultural (Ag1)
- Rural Resource (RR1)
- General Commercial (C1)
- Local Commercial (C1A)
- Highway Commercial (C2)
- Highway Commercial - Manufactured Home Dealer (C2A)
- Tourist Commercial (C3)

#### Transportation

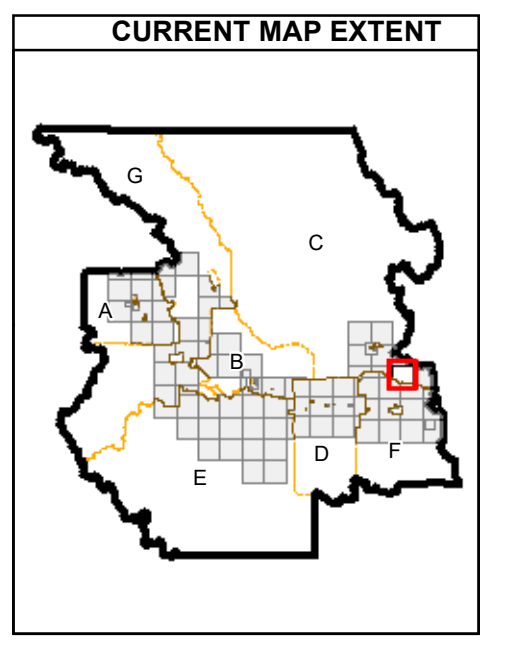
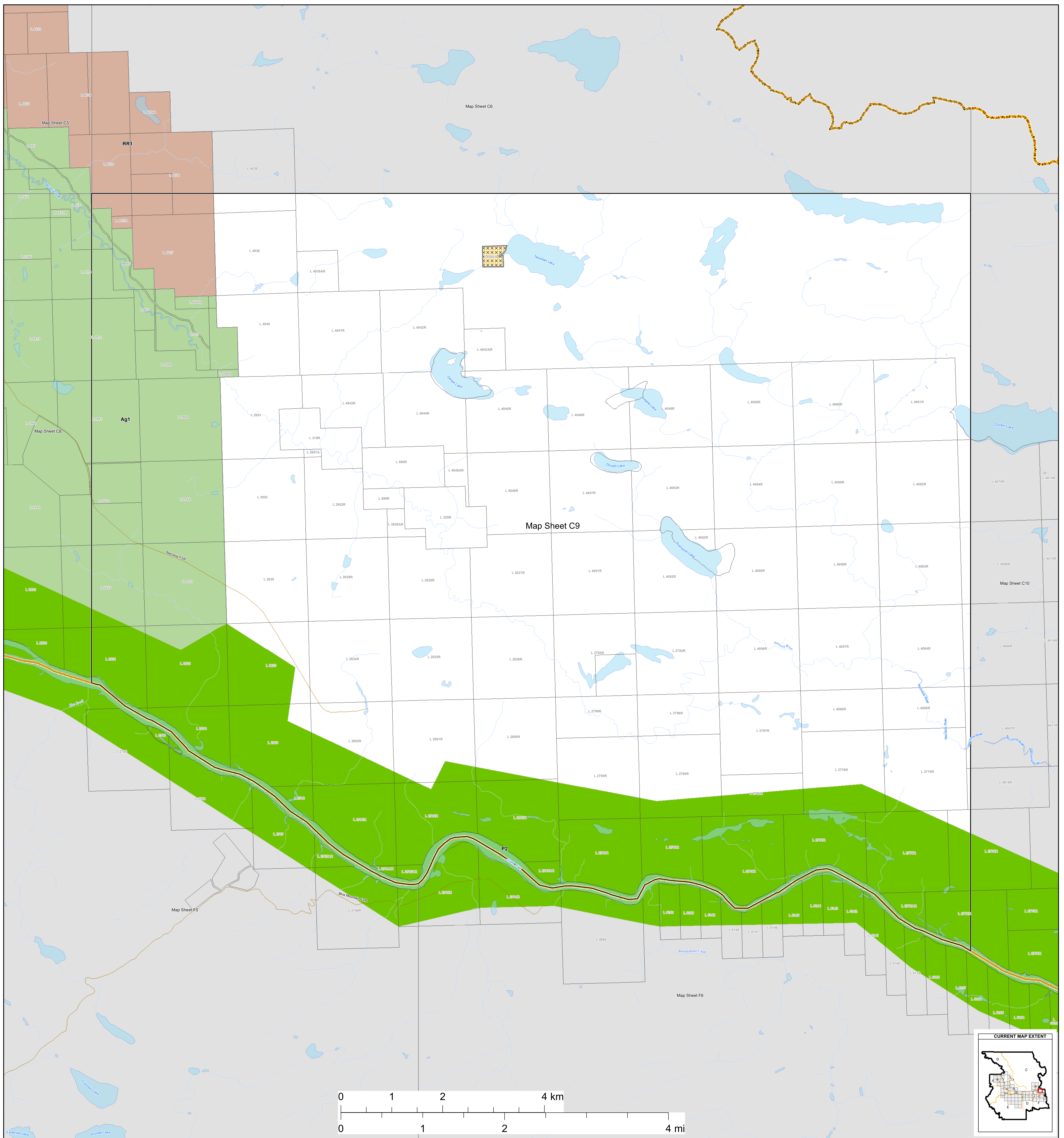
- Street
- Highway
- Ferry
- FSR
- Secondary Road
- Railways

- Strata Resort Commercial (C4)
- Light Industrial (M1)
- Light Industrial - Contracting (M1A)
- Heavy Industrial (M2)
- Agricultural Industry (M3)
- Civic/Institutional (P1)
- Special Civic/Institutional (P1A)
- Recreation (P2)
- Special Recreation (P2A)
- Airport (A1)
- Wind Farm (WF)

REVISEMENTS			
REV	DESCRIPTION	DATE	APPROVED







# Zoning Bylaw 1800, 2020

## Schedule "B"

### Zoning Map Series

#### Electoral Area "C"

#### Zoning

- Single Family Residential (R1)
- Multiple Family Residential (R2)
- Waterfront Residential I (R3)
- Waterfront Residential II (R4)
- Country Residential (R5)
- Rural Residential (R6)
- Manufactured Home Park (R7)
- Hudson Bay Mountain Recreational Residential (R8)
- Hudson Bay Mountain Single Family Residential (R9)
- Hudson Bay Mountain Multiple Family Residential (R10)
- Bare Land Strata Residential (R11)
- Small Holdings (H1)
- Small Holdings - Additional Dwelling (H1A)
- Small Holdings - Industrial Shop (H1B)
- Large Holdings (H2)
- Agricultural (Ag1)
- Rural Resource (RR1)
- General Commercial (C1)
- Local Commercial (C1A)
- Highway Commercial (C2)
- Highway Commercial - Manufactured Home Dealer (C2A)
- Tourist Commercial (C3)
- Strata Resort Commercial (C4)
- Light Industrial (M1)
- Light Industrial - Contracting (M1A)
- Heavy Industrial (M2)
- Agricultural Industry (M3)
- Civic/Institutional (P1)
- Special Civic/Institutional (P1A)
- Recreation (P2)
- Special Recreation (P2A)
- Airport (A1)
- Wind Farm (WF)

#### Other Features

- Municipalities
- Electoral Areas
- Cadastral
- Federal Indian Reserves

#### Transportation

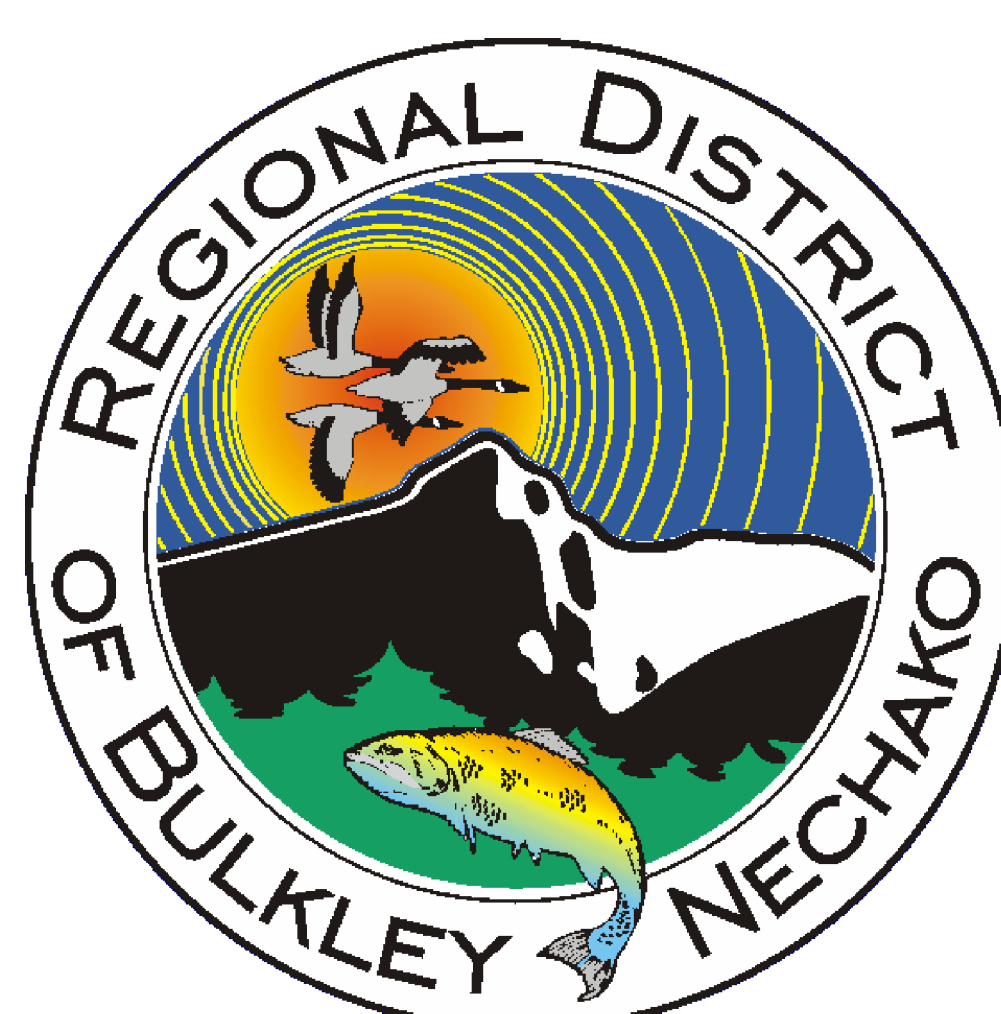
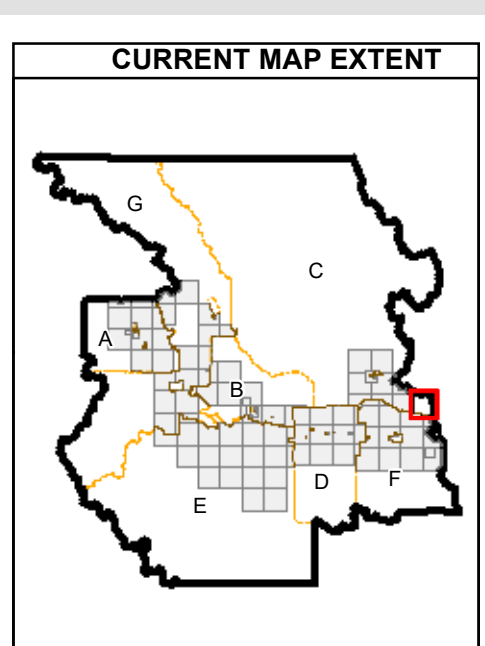
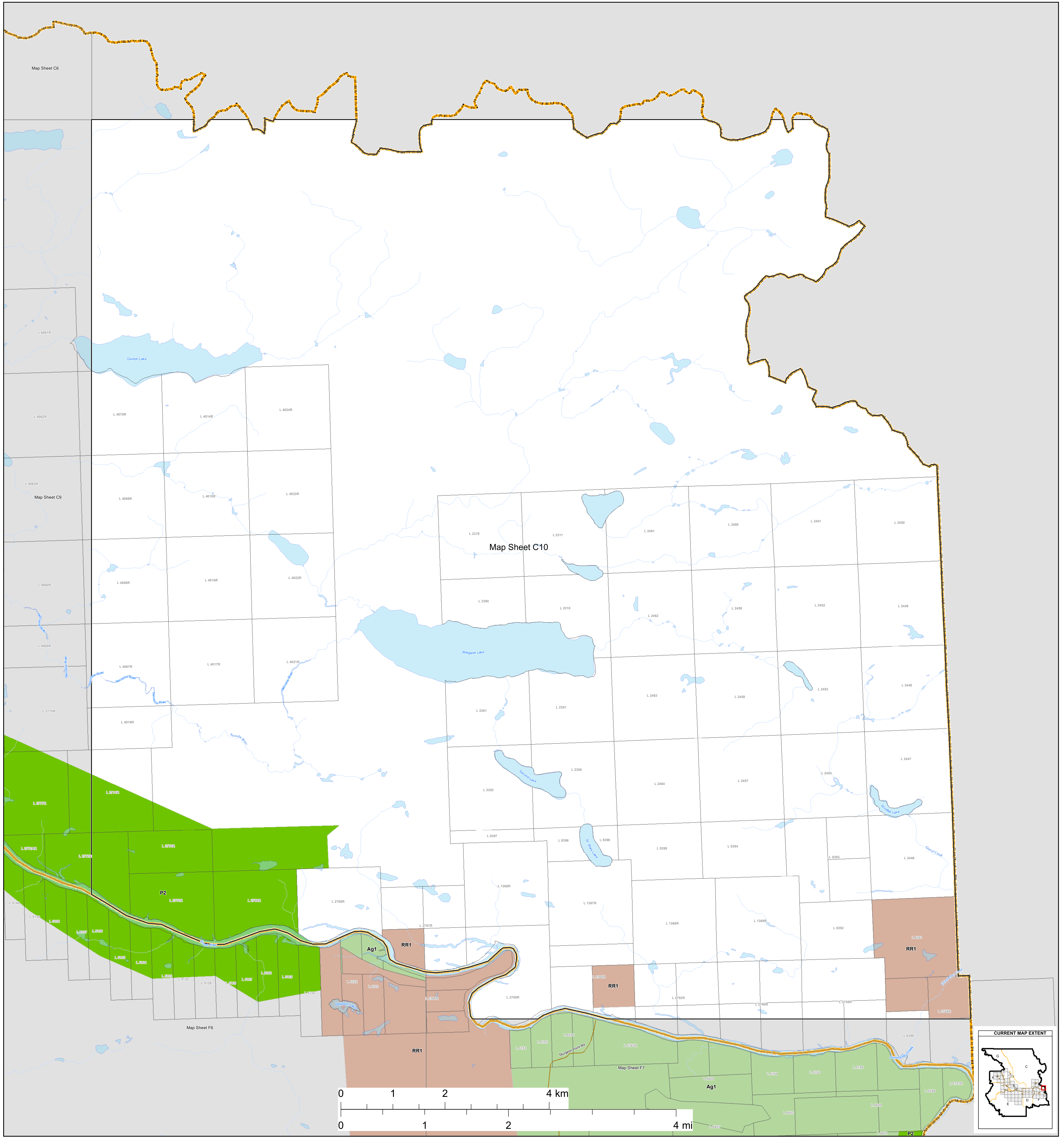
- Street
- Highway
- Ferry
- FSR
- Secondary Road
- Railways

REVISEMENTS			
REV	DESCRIPTION	DATE	APPROVED

Bulkley-Nechako Regional District  
 2020-11-10 10:00 AM  
 Bulkley-Nechako Regional District  
 2020-11-10 10:00 AM  
 Bulkley-Nechako Regional District  
 2020-11-10 10:00 AM  
 Bulkley-Nechako Regional District  
 2020-11-10 10:00 AM

Produced by the Regional District of Bulkley-Nechako





**Zoning Bylaw 1800, 2020**  
**Schedule "B"**  
**Zoning Map Series**  
**Electoral Area "C"**

**Zoning**

- |  |  |   |
|--|--|---|
| <ul style="list-style-type: none"> <li>Single Family Residential (R1)</li> <li>Multiple Family Residential (R2)</li> <li>Waterfront Residential I (R3)</li> <li>Waterfront Residential II (R4)</li> <li>Country Residential (R5)</li> <li>Rural Residential (R6)</li> <li>Manufactured Home Park (R7)</li> <li>Hudson Bay Mountain Recreational Residential (R8)</li> <li>Hudson Bay Mountain Single Family Residential (R9)</li> <li>Hudson Bay Mountain Multiple Family Residential (R10)</li> <li>Bare Land Strata Residential (R11)</li> </ul> | <ul style="list-style-type: none"> <li>Small Holdings (H1)</li> <li>Small Holdings - Additional Dwelling (H1A)</li> <li>Small Holdings - Industrial Shop (H1B)</li> <li>Large Holdings (H2)</li> <li>Agricultural (Ag1)</li> <li>Rural Resource (RR1)</li> <li>General Commercial (C1)</li> <li>Local Commercial (C1A)</li> <li>Highway Commercial (C2)</li> <li>Highway Commercial - Manufactured Home Dealer (C2A)</li> <li>Tourist Commercial (C3)</li> </ul> | <ul style="list-style-type: none"> <li>Strata Resort Commercial (C4)</li> <li>Light Industrial (M1)</li> <li>Light Industrial - Contracting (M1A)</li> <li>Heavy Industrial (M2)</li> <li>Agricultural Industry (M3)</li> <li>Civic/Institutional (P1)</li> <li>Special Civic/Institutional (P1A)</li> <li>Recreation (P2)</li> <li>Special Recreation (P2A)</li> <li>Airport (A1)</li> <li>Wind Farm (WF)</li> </ul> |
|--|--|---|

**Other Features**

- Municipalities
- Electoral Areas
- Cadastral
- Federal Indian Reserves

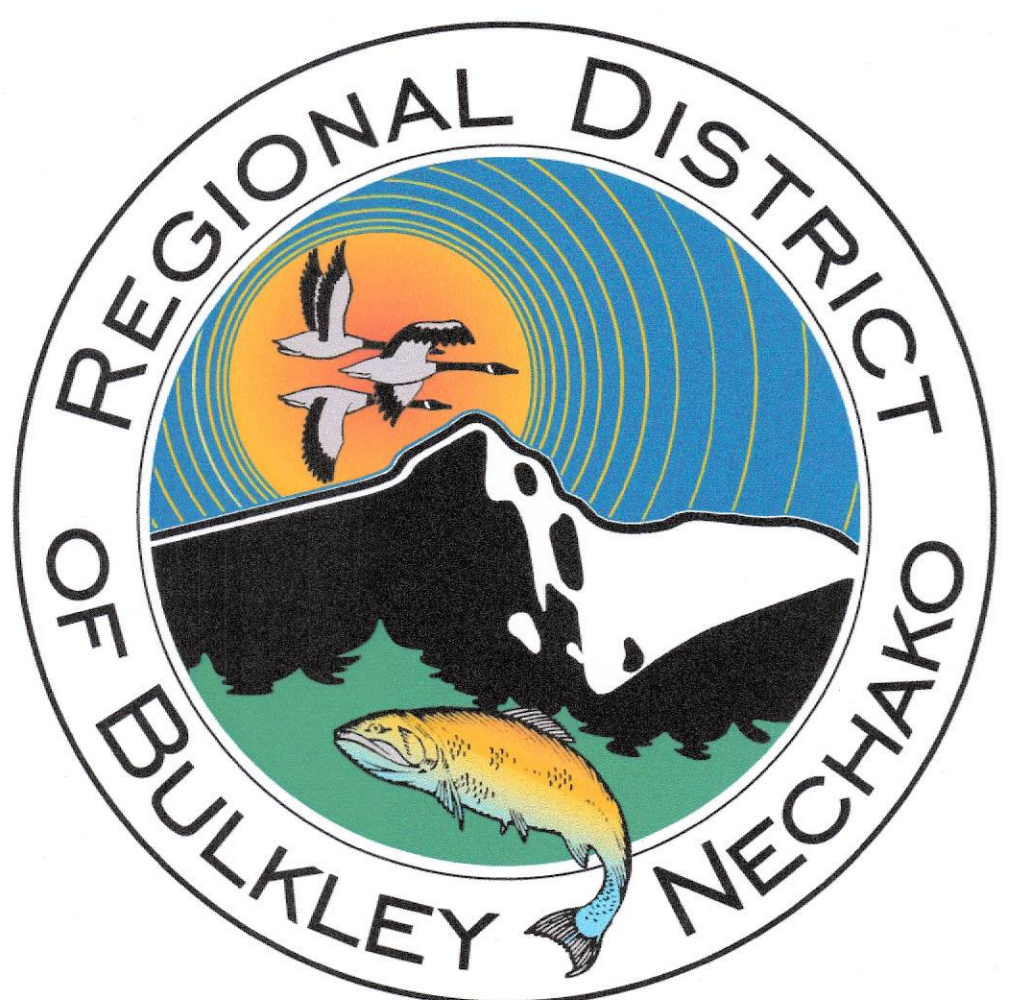
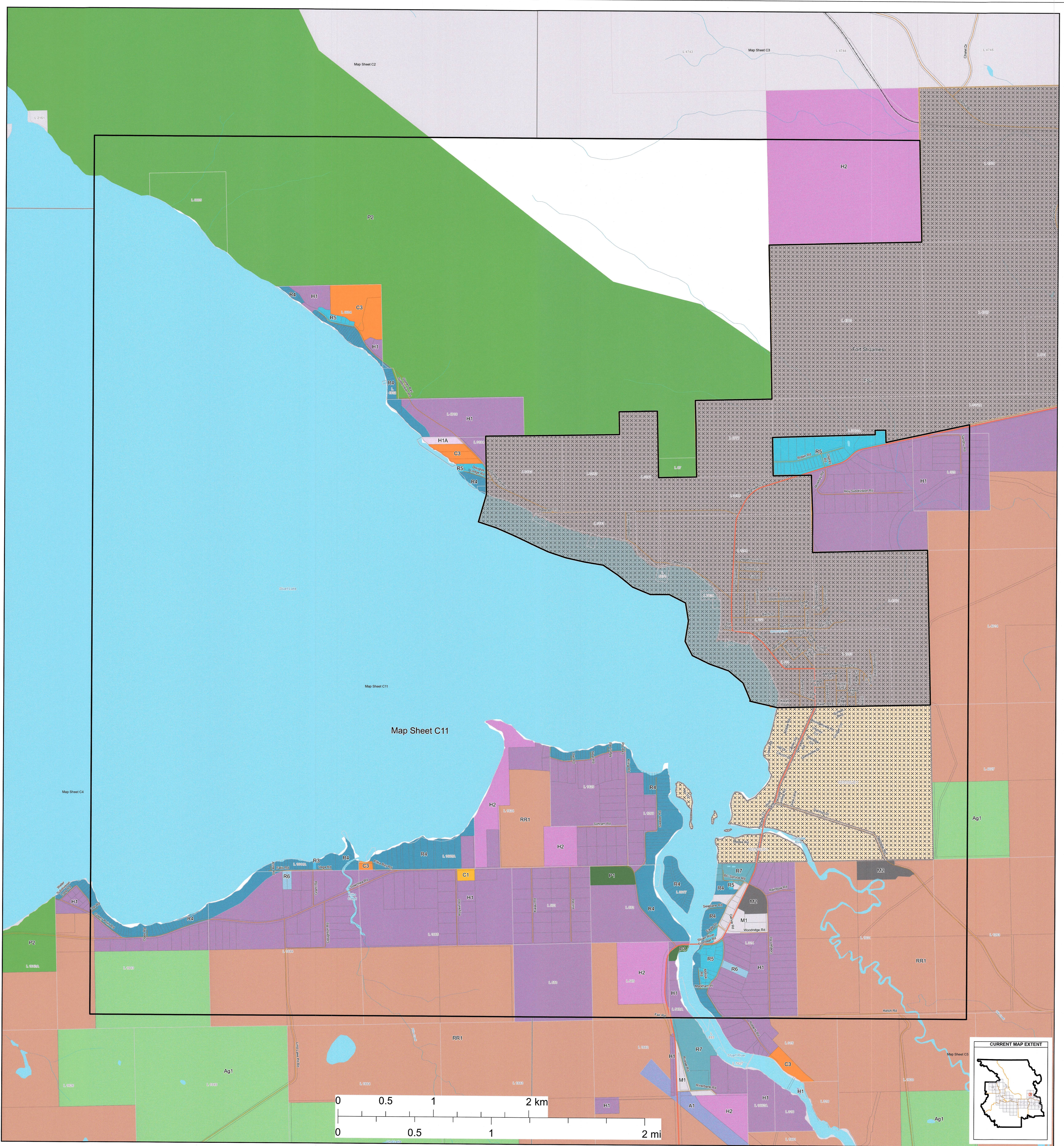
**Transportation**

- Street
- Highway
- Ferry
- FSR
- Secondary Road
- Railways

REVISEMENTS			
REV	DESCRIPTION	DATE	APPROVED

Produced by the Regional District of Bulkley-Nechako





# Zoning Bylaw 1800, 2020

## Schedule "B" Zoning Map Series Electoral Area "C"

### Zoning

- Single Family Residential (R1)
- Multi Family Residential (R2)
- Waterfront Residential I (R3)
- Waterfront Residential II (R4)
- Country Residential (R5)
- Rural Residential (R6)
- Manufactured Home Park (R7)
- Hudson Bay Mountain Recreational Residential (R8)
- Hudson Bay Mountain Single Family Residential (R9)
- Hudson Bay Mountain Multiple Family Residential (R10)
- Bare Land Strata Residential (R11)
- Small Holdings (H1)
- Small Holdings - Additional Dwelling (H1A)
- Small Holdings - Industrial Shop (H1B)
- Large Holdings (H2)
- Agricultural (Ag1)
- Rural Resource (RR1)
- General Commercial (C1)
- Local Commercial (C1A)
- Highway Commercial (C2)
- Highway Commercial - Manufactured Home Dealer (C2A)
- Tourist Commercial (C3)
- Strata Resort Commercial (C4)
- Light Industrial (M1)
- Light Industrial - Contracting (M1A)
- Heavy Industrial (M2)
- Agricultural Industry (M3)
- Civic/Institutional (P1)
- Special Civic/Institutional (P1A)
- Recreation (P2)
- Special Recreation (P2A)
- Airport (A1)
- Wind Farm (WF)

### Other Features

- Municipalities
- Electoral Areas
- Cadastre
- Federal Indian Reserves

### Transportation

- Street
- Highway
- Ferry
- FSR
- Secondary Road
- Railroad

REV	DESCRIPTION	DATE	APPROVED
1	Amendment 1948	Jul 24 2021	
2	Amendment 1915	Aug 11 2022	

Produced by the Regional District of Bulkley-Nechako